

# VOLVO CONSTRUCTION EQUIPMENT MATRIS REPORT

Machine model <b>L180F</b>	Serial no <b>11633</b>	Operating hours <b>7722,6</b>	Reading date <b>21-11-2013</b>	Page <b>1</b>
Company <b>Volvo entreprenørmaskiner</b>	Dealer		Report Issuer	
Contact Name	Technician <b>Ole Henningsen</b>		Primary Application <b>Lose VirginBank (e.g. sand, gravel)</b>	
Site	Workorder <b>W120768</b>		Ground Condition	

## Matris Reading, Summary / Recommendation

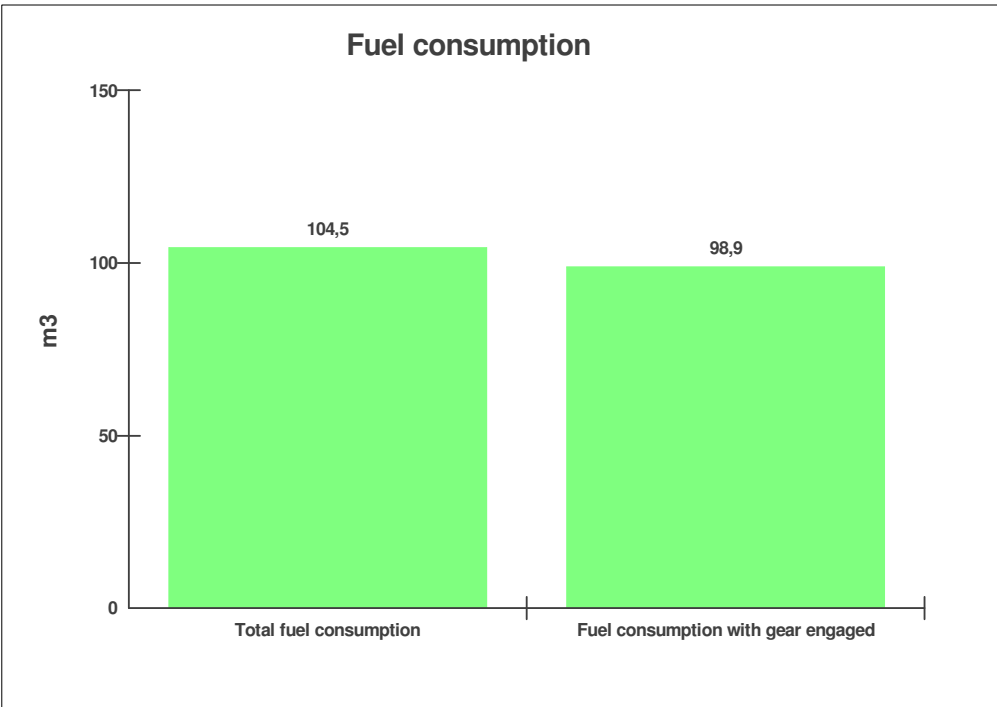
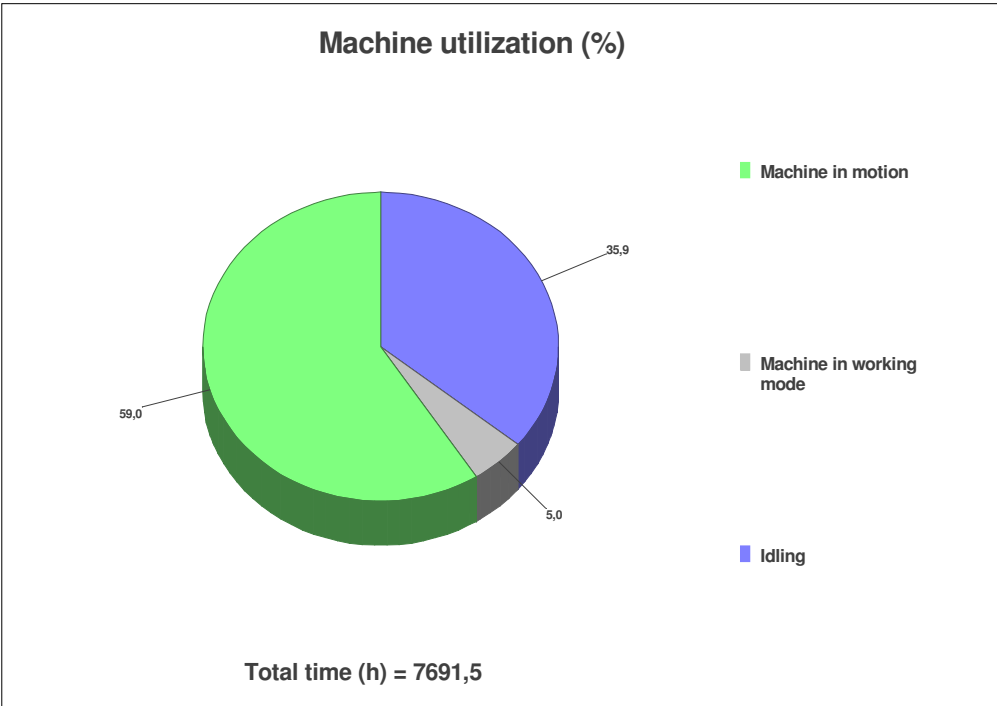


Machine model L180F	Serial no 11633	Operating hours 7722,6	Reading date 21-11-2013	Page 2
------------------------	--------------------	---------------------------	----------------------------	-----------

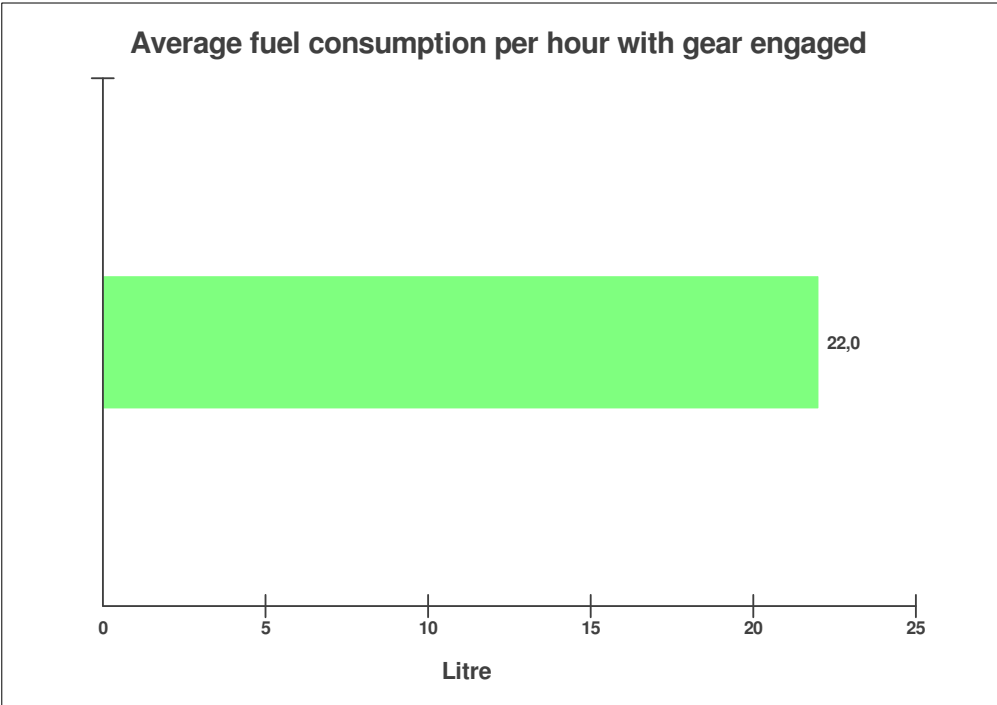
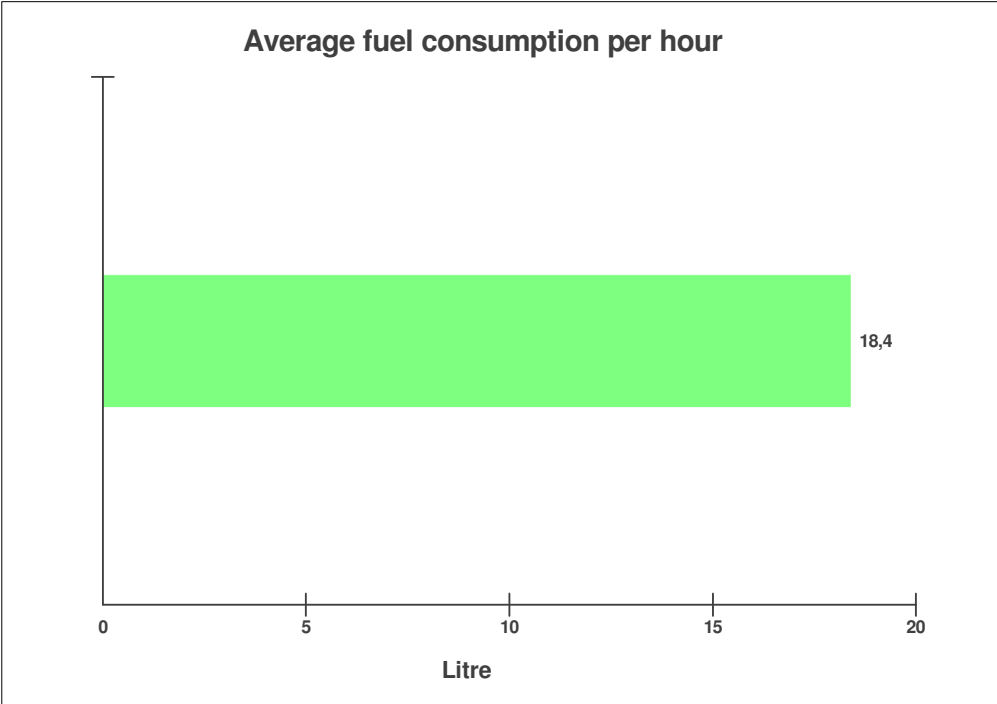
<b>Main equipment:</b>	<b>Type:</b>	<b>Equipment</b>	
	<b>Tyre size/class</b>	<b>26,5-25 E4</b>	
	<b>Chains</b>	<b>Not mounted</b>	
	<b>Extra Counterweight</b>	<b>None</b>	
	<b>Volume m3 (yd3) / Area m2 (ft2)</b>	<b>5,0 (6.5)</b>	<b>5,0 (53.8)</b>



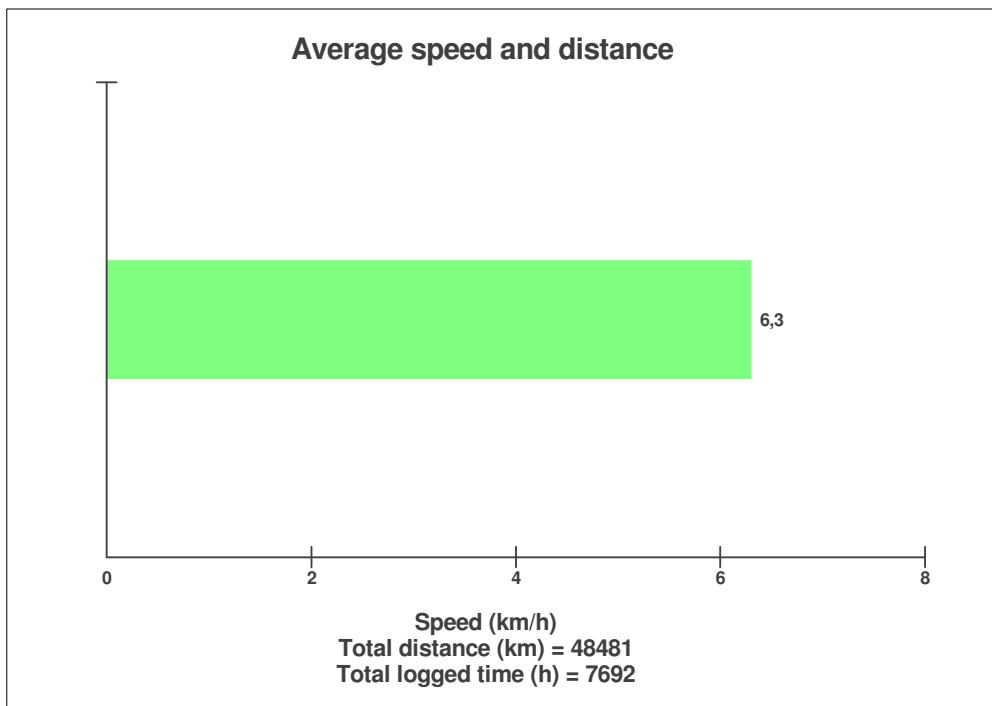
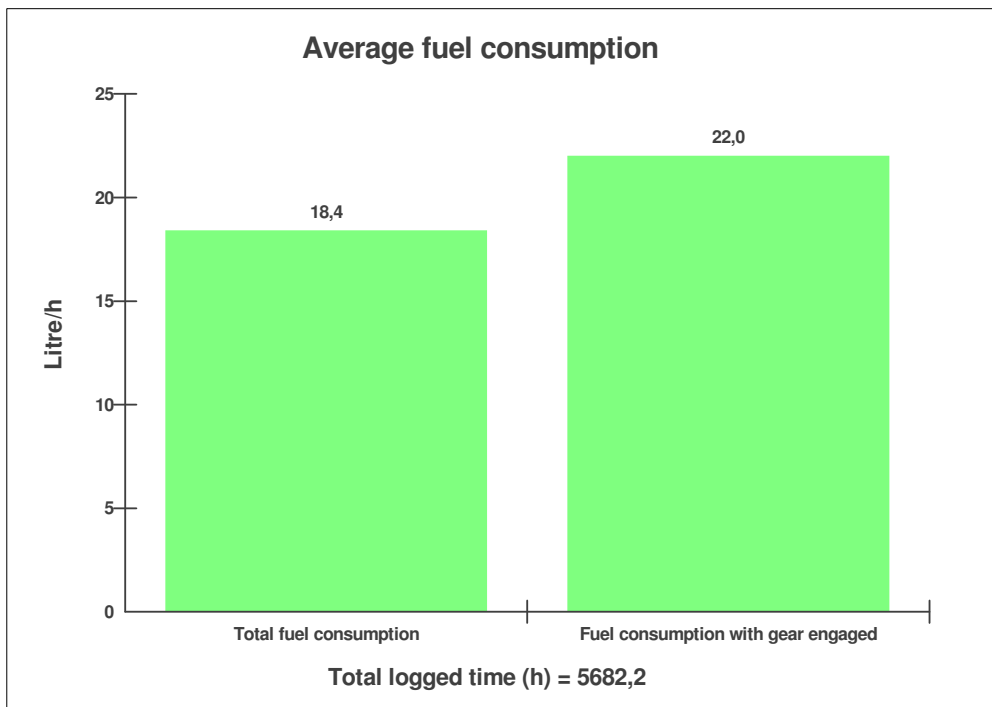
Machine model <b>L180F</b>	Serial no <b>11633</b>	Operating hours <b>7722,6</b>	Reading date <b>21-11-2013</b>	Page <b>3</b>
-------------------------------	---------------------------	----------------------------------	-----------------------------------	------------------



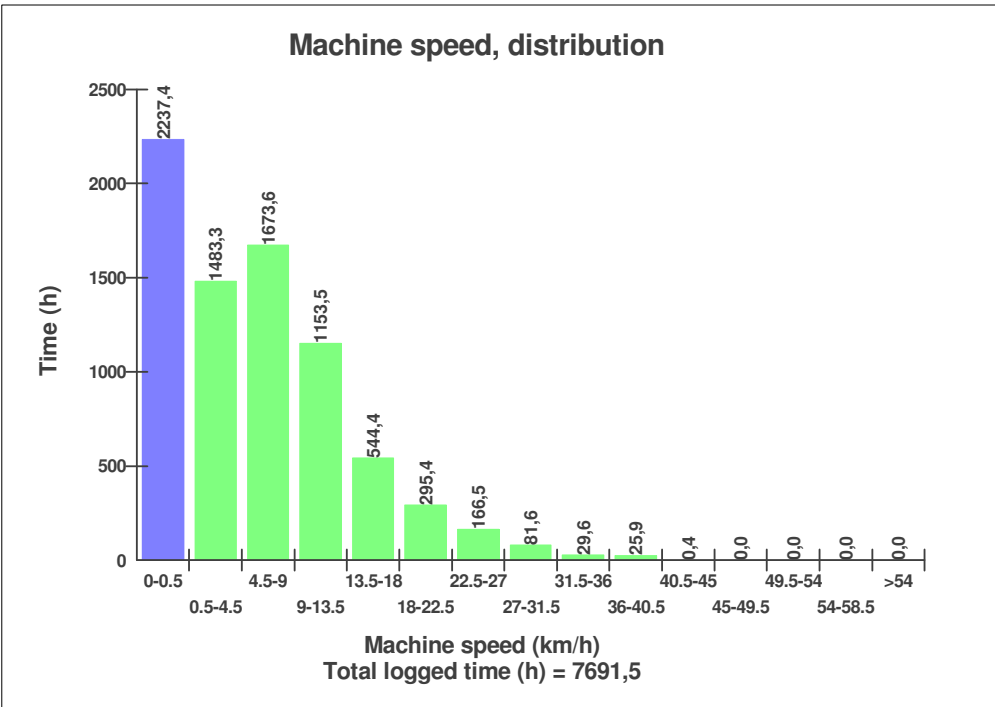
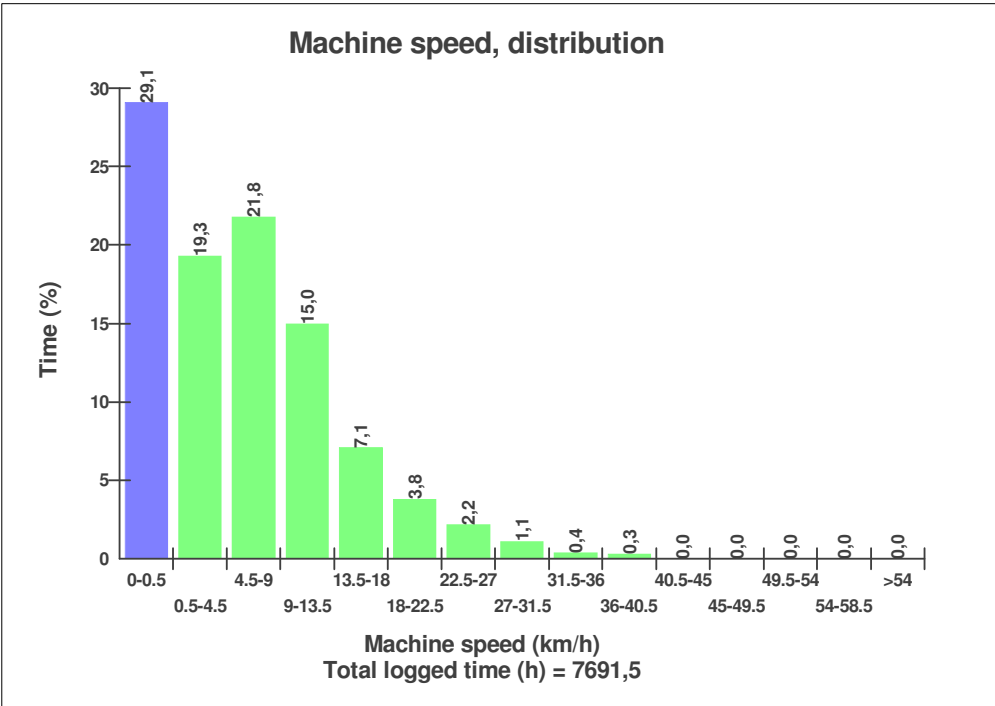
Machine model <b>L180F</b>	Serial no <b>11633</b>	Operating hours <b>7722,6</b>	Reading date <b>21-11-2013</b>	Page <b>4</b>
-------------------------------	---------------------------	----------------------------------	-----------------------------------	------------------



Machine model <b>L180F</b>	Serial no <b>11633</b>	Operating hours <b>7722,6</b>	Reading date <b>21-11-2013</b>	Page <b>5</b>
-------------------------------	---------------------------	----------------------------------	-----------------------------------	------------------



Machine model <b>L180F</b>	Serial no <b>11633</b>	Operating hours <b>7722,6</b>	Reading date <b>21-11-2013</b>	Page <b>6</b>
-------------------------------	---------------------------	----------------------------------	-----------------------------------	------------------



Machine model L180F	Serial no 11633	Operating hours 7722,6	Reading date 21-11-2013	Page 7
------------------------	--------------------	---------------------------	----------------------------	-----------

### Engine ECU information

<b>ECU MID</b>	<b>128</b>
<b>Hardware Part No</b>	<b>20814604</b>
<b>Hardware Issue</b>	<b>3</b>
<b>Software Part No</b>	<b>21051107</b>
<b>Software Issue</b>	<b>1</b>
<b>Serial no</b>	<b>8043361</b>
<b>Dataset 1 Part No</b>	<b>11449070</b>
<b>Dataset 1 Issue</b>	<b>1</b>
<b>Dataset 2 Part No</b>	<b>11449072</b>
<b>Dataset 2 Issue</b>	<b>1</b>



Machine model L180F	Serial no 11633	Operating hours 7722,6	Reading date 21-11-2013	Page 8
------------------------	--------------------	---------------------------	----------------------------	-----------

### Instrument ECU information

<b>ECU MID</b>	<b>140</b>
<b>Hardware Part No</b>	<b>11443800</b>
<b>Hardware issue</b>	<b>1</b>
<b>Software Part No</b>	<b>11383279</b>
<b>Serial no</b>	<b>472477</b>
<b>Dataset 1 Part No</b>	<b>11443448</b>
<b>Dataset 2 Part No</b>	<b>11383200</b>





Machine model L180F	Serial no 11633	Operating hours 7722,6	Reading date 21-11-2013	Page 9
------------------------	--------------------	---------------------------	----------------------------	-----------

### Vehicle ECU information

<b>ECU MID</b>	<b>187</b>
<b>Hardware Part No</b>	<b>11443500</b>
<b>Hardware issue</b>	<b>1</b>
<b>Software Part No</b>	<b>11383280</b>
<b>Serial no</b>	<b>8023004</b>
<b>Dataset 1 Part No</b>	<b>11381235</b>
<b>Dataset 2 Part No</b>	<b>11381720</b>



Machine model L180F	Serial no 11633	Operating hours 7722,6	Reading date 21-11-2013	Page 10
------------------------	--------------------	---------------------------	----------------------------	------------

### Vehicle\_2 ECU information

<b>ECU MID</b>	<b>249</b>
<b>Hardware Part No</b>	<b>11443700</b>
<b>Hardware issue</b>	<b>1</b>
<b>Software Part No</b>	<b>11383281</b>
<b>Serial no</b>	<b>8393058</b>
<b>Dataset 1 Part No</b>	<b>11443725</b>
<b>Dataset 2 Part No</b>	<b>11381721</b>



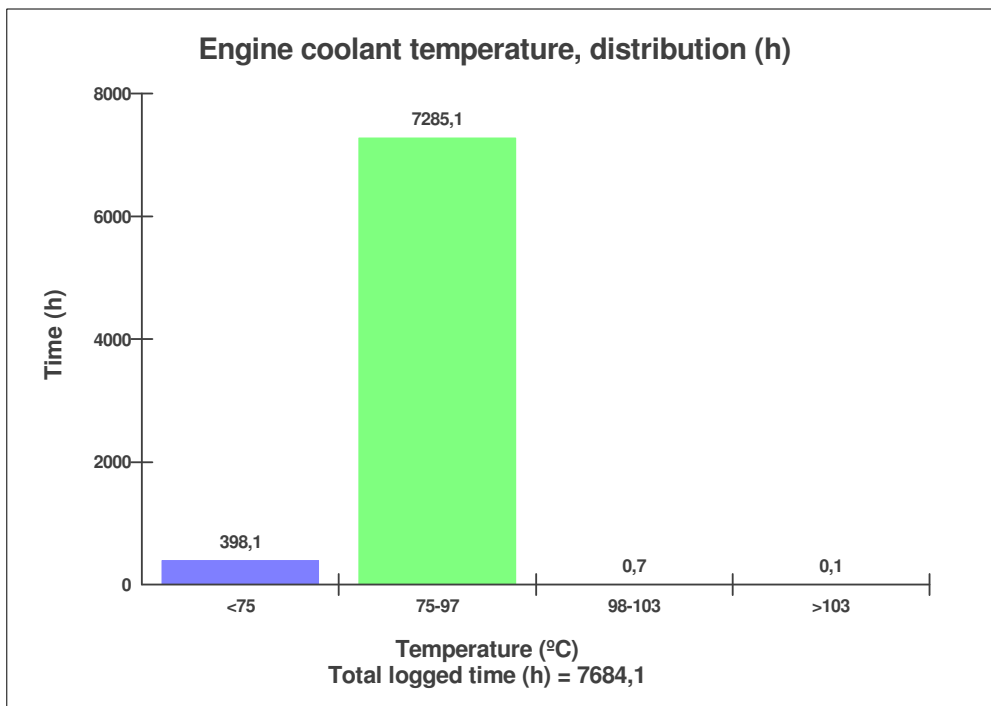
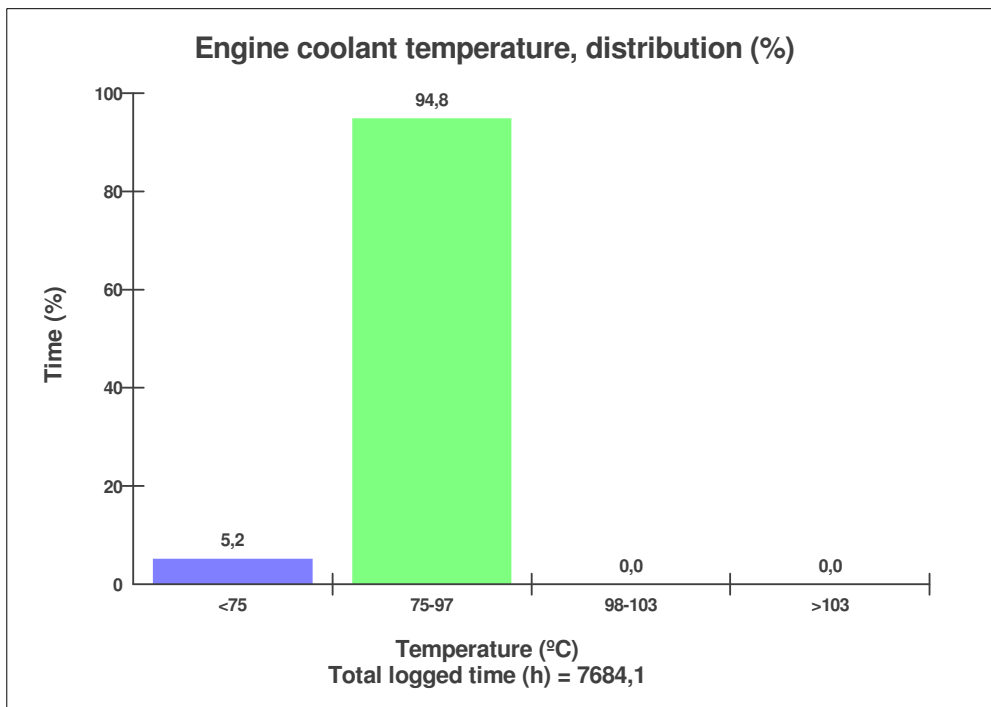
Machine model L180F	Serial no 11633	Operating hours 7722,6	Reading date 21-11-2013	Page 11
------------------------	--------------------	---------------------------	----------------------------	------------

### Climate ECU information

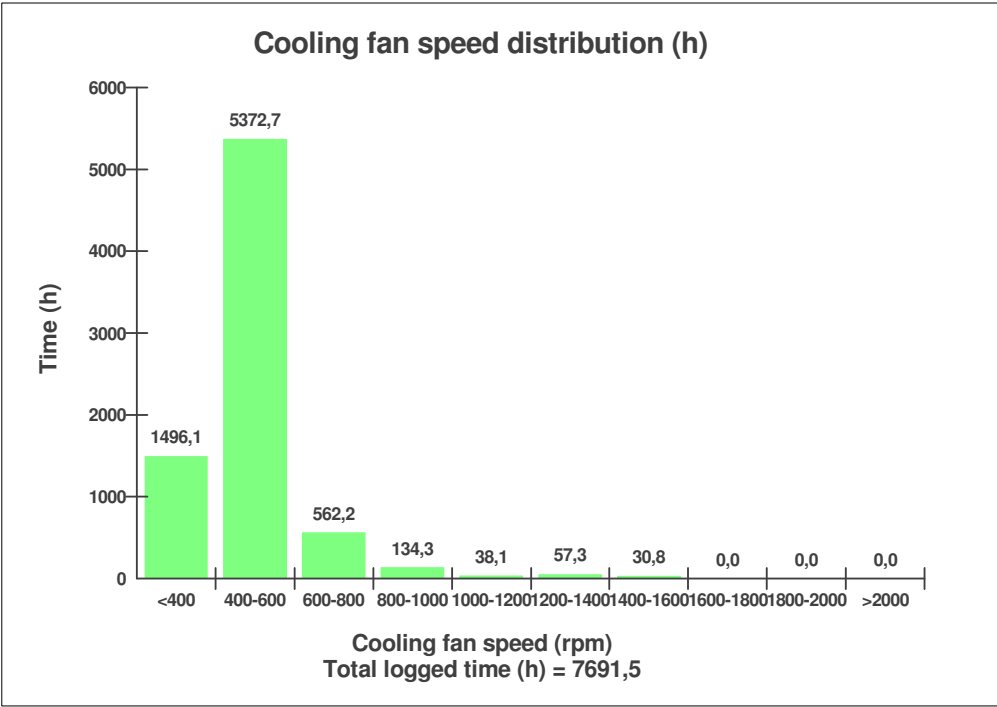
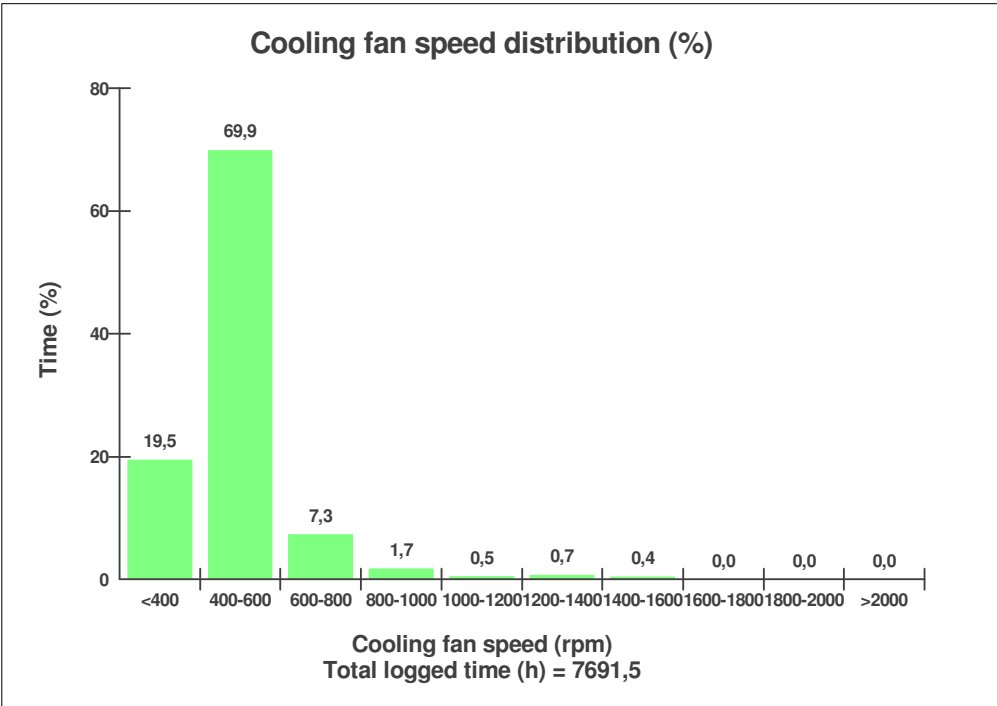
<b>ECU MID</b>	<b>146</b>
<b>Hardware Part No</b>	<b>11443400</b>
<b>Hardware issue</b>	<b>3</b>
<b>Software Part No</b>	<b>11383027</b>
<b>Serial no</b>	<b>8021337</b>
<b>Dataset 1 Part No</b>	<b>11443738</b>
<b>Dataset 2 Part No</b>	<b>11381799</b>



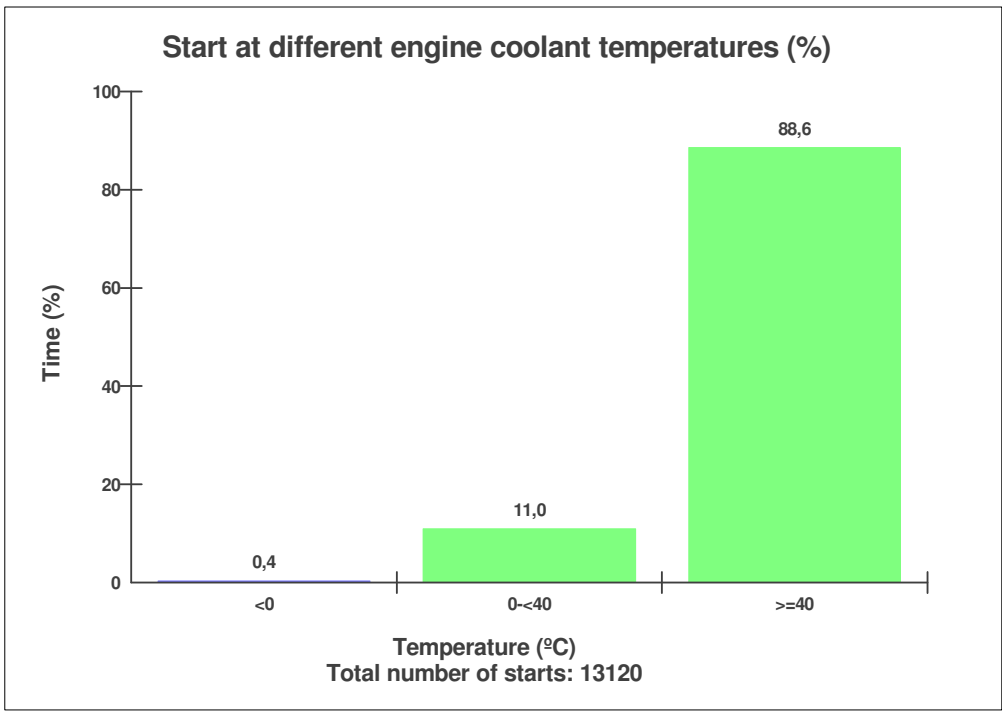
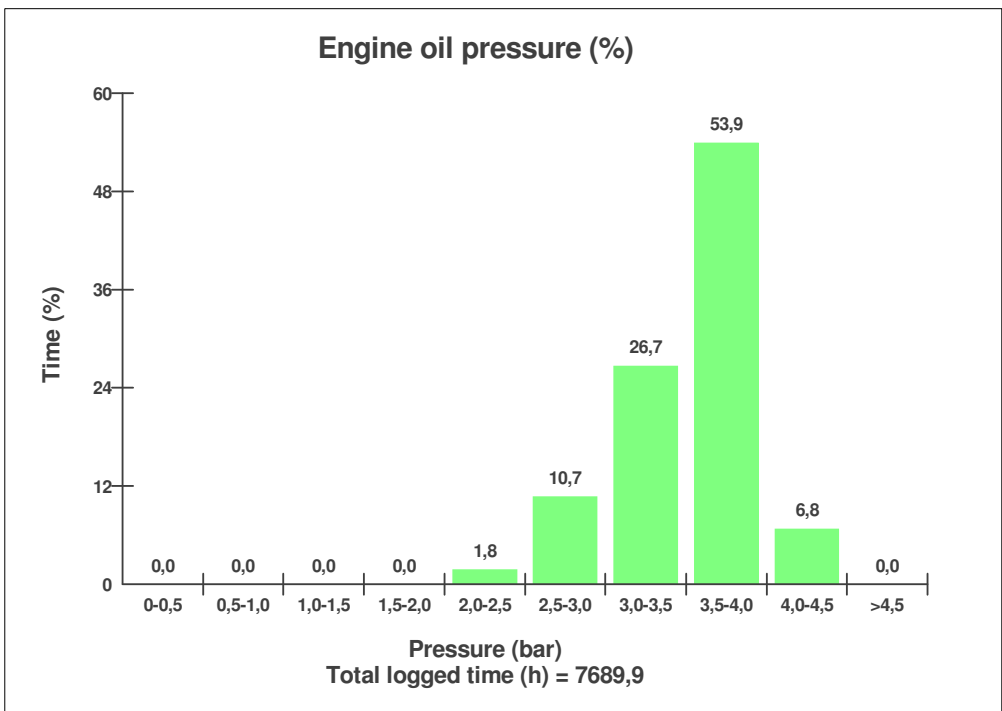
Machine model <b>L180F</b>	Serial no <b>11633</b>	Operating hours <b>7722,6</b>	Reading date <b>21-11-2013</b>	Page <b>12</b>
-------------------------------	---------------------------	----------------------------------	-----------------------------------	-------------------



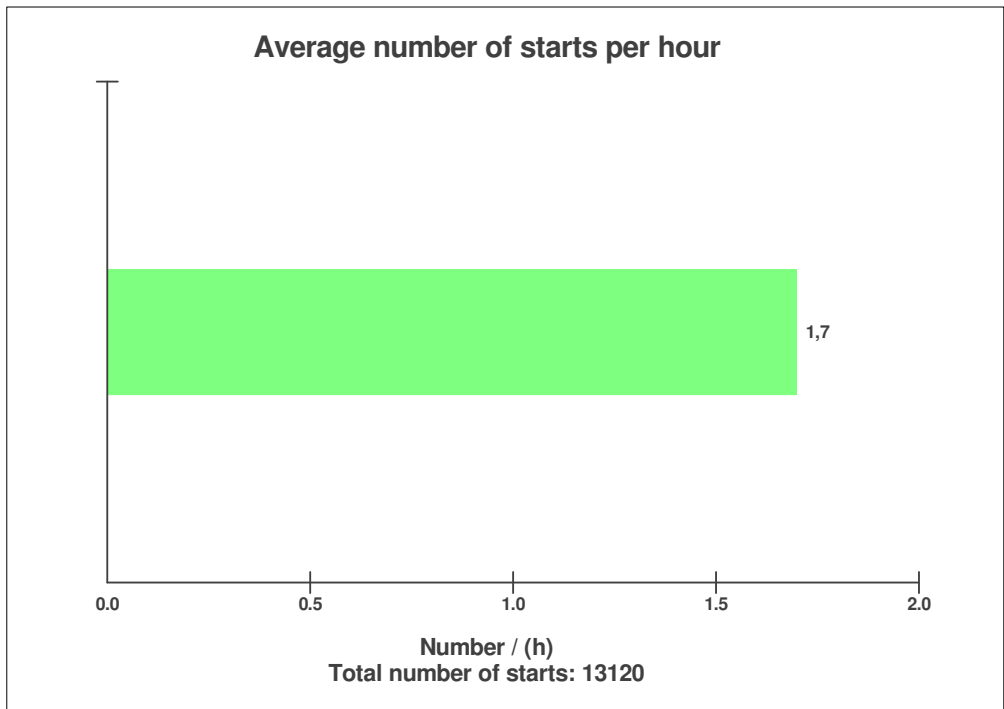
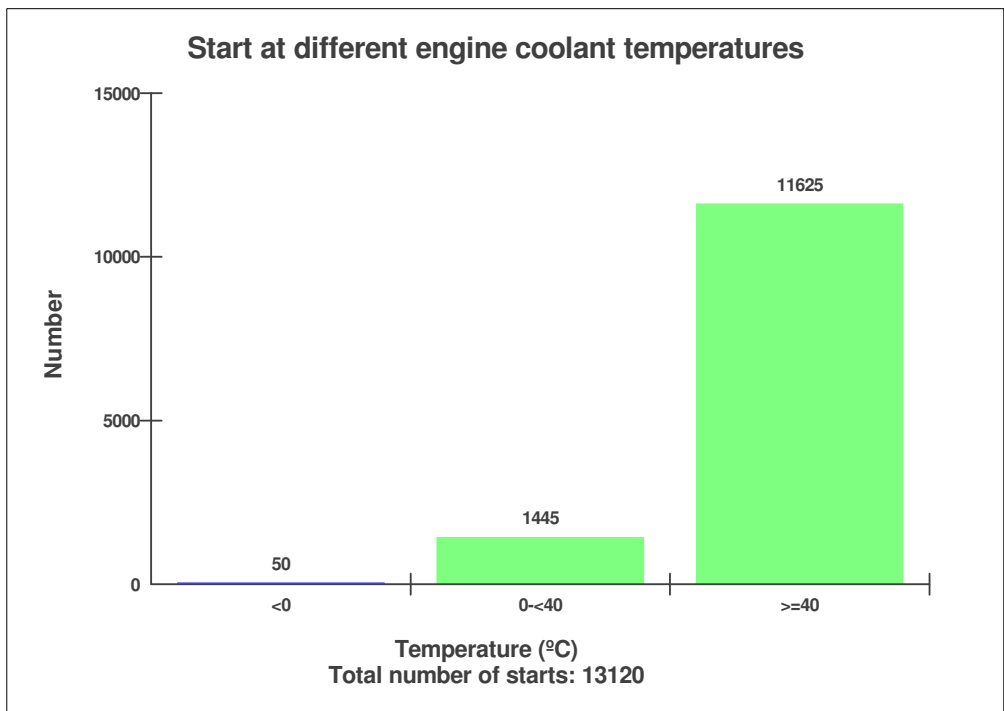
Machine model <b>L180F</b>	Serial no <b>11633</b>	Operating hours <b>7722,6</b>	Reading date <b>21-11-2013</b>	Page <b>13</b>
-------------------------------	---------------------------	----------------------------------	-----------------------------------	-------------------

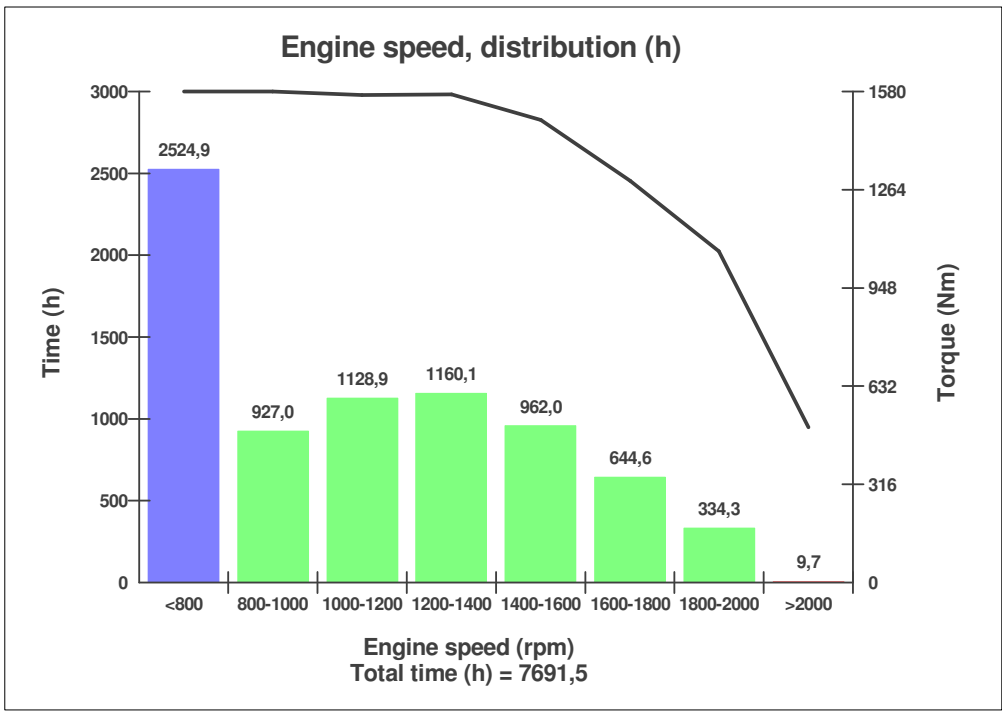
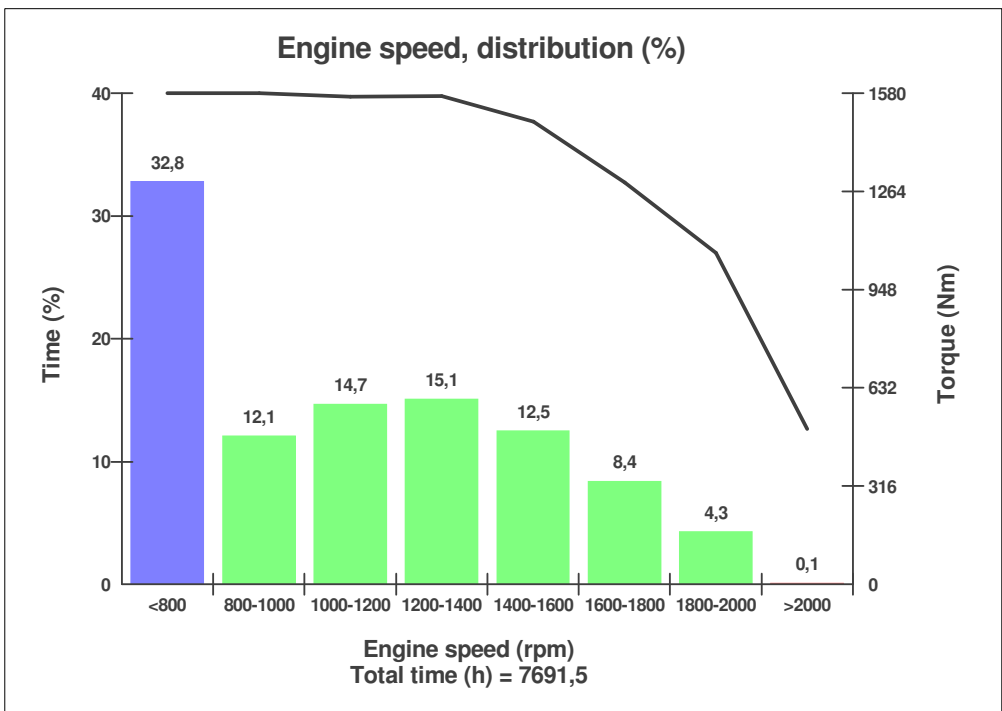


Machine model <b>L180F</b>	Serial no <b>11633</b>	Operating hours <b>7722,6</b>	Reading date <b>21-11-2013</b>	Page <b>14</b>
-------------------------------	---------------------------	----------------------------------	-----------------------------------	-------------------



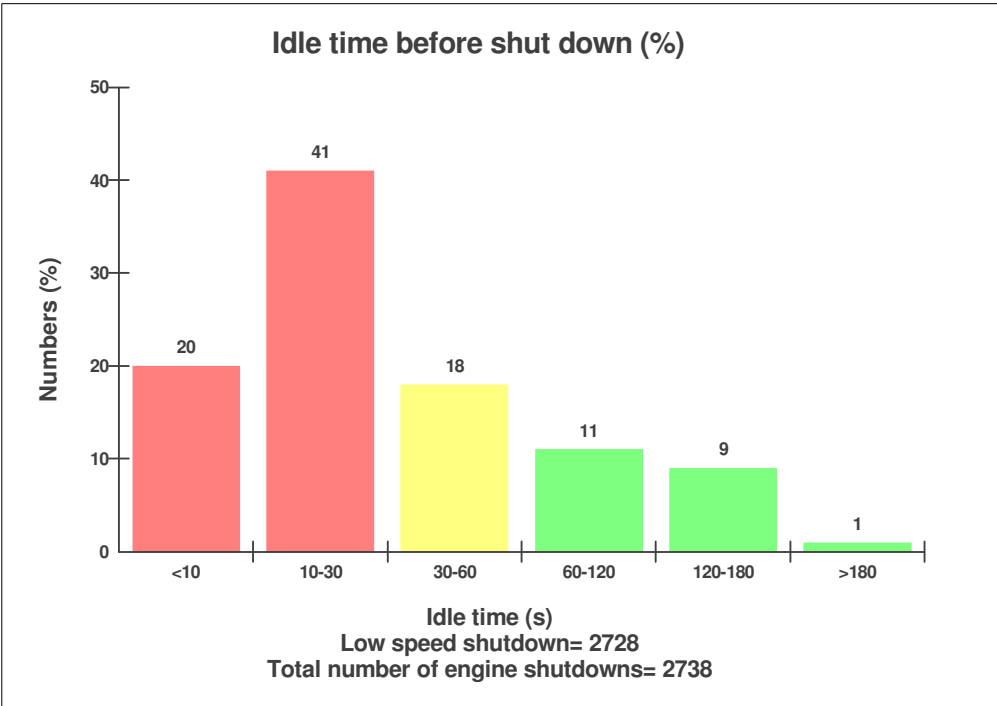
Machine model <b>L180F</b>	Serial no <b>11633</b>	Operating hours <b>7722,6</b>	Reading date <b>21-11-2013</b>	Page <b>15</b>
-------------------------------	---------------------------	----------------------------------	-----------------------------------	-------------------







Machine model <b>L180F</b>	Serial no <b>11633</b>	Operating hours <b>7722,6</b>	Reading date <b>21-11-2013</b>	Page <b>17</b>
-------------------------------	---------------------------	----------------------------------	-----------------------------------	-------------------



Machine model L180F	Serial no 11633	Operating hours 7722,6	Reading date 21-11-2013	Page 18
------------------------	--------------------	---------------------------	----------------------------	------------

**Low Engine Oil Pressure**  
**Total number of occurrences = 33**

Op hours	Year	Month	Day	Hour	Minute	Duration (sec)	Extreme (bar)
* 7094	2013	1	3	6	24	38	20
* 7097	2013	1	4	6	29	11	21
* 7120	2013	1	10	6	27	34	20
* 7123	2013	1	11	6	27	27	17
* 7133	2013	1	15	6	26	62	23
* 7136	2013	1	16	6	27	90	23
* 7138	2013	1	17	6	30	313	26
* 7152	2013	1	24	14	40	3	23
* 7157	2013	1	28	6	27	146	27
* 7237	2013	2	14	6	2	2	26
* 7237	2013	2	14	6	4	11	28
* 7299	2013	2	27	5	39	102	18
* 7318	2013	3	1	5	42	83	17
* 7352	2013	3	7	5	42	214	19
* 7362	2013	3	8	5	45	261	23
* 7379	2013	3	12	5	45	222	18
* 7398	2013	3	14	5	52	624	22
* 7406	2013	3	15	5	43	801	10
* 7720	2013	10	7	11	21	12	23
* 7720	2013	10	7	11	24	33	25



Machine model L180F	Serial no 11633	Operating hours 7722,6	Reading date 21-11-2013	Page 19
------------------------	--------------------	---------------------------	----------------------------	------------

**Low engine oil level at start**  
**Total number of occurrences = 10**

	Op hours	Year	Month	Day	Hour	Minute
*	0	2000	0	0	0	0
*	0	2000	0	0	0	0
*	0	2000	0	0	0	0
*	0	2000	0	0	0	0
*	0	2000	0	0	0	0
*	0	2000	0	0	0	0
*	0	2000	0	0	0	0
*	0	2000	0	0	0	0
*	0	2000	0	0	0	0
*	0	2000	0	0	0	0
*	2746	2011	5	23	6	55
*	2746	2011	5	23	6	58
*	2899	2011	6	29	10	43
*	3332	2011	10	12	14	51
*	3446	2011	11	3	11	24
*	3448	2011	11	3	15	7
*	3470	2011	11	9	7	11
*	3500	2011	11	15	15	47
*	3500	2011	11	15	15	52
*	3508	2011	11	17	6	57



Machine model L180F	Serial no 11633	Operating hours 7722,6	Reading date 21-11-2013	Page 20
------------------------	--------------------	---------------------------	----------------------------	------------

**High engine coolant temperature**  
**Total number of occurrences = 16**

Op hours	Year	Month	Day	Hour	Minute	Duration (sec)	Extreme (°C)
0	2000	0	0	0	0	0	0
0	2000	0	0	0	0	0	0
0	2000	0	0	0	0	0	0
0	2000	0	0	0	0	0	0
1717	2009	6	24	10	19	404	102
1730	2009	6	29	11	30	86	103
1730	2009	6	29	11	34	134	104
1731	2009	6	29	11	38	33	104
1732	2009	6	29	14	8	259	103
1753	2009	7	5	9	44	169	105
1753	2009	7	5	9	49	23	106
1850	2009	7	26	11	57	214	104
1850	2009	7	26	12	27	1	101
1859	2009	7	28	11	50	20	101
1859	2009	7	28	12	0	24	101
1945	2009	7	31	15	48	135	101
1993	2009	8	9	10	25	94	101
3136	2010	5	10	8	31	113	103
3231	2010	6	1	14	14	60	101
3232	2010	6	1	15	13	88	102



Machine model L180F	Serial no 11633	Operating hours 7722,6	Reading date 21-11-2013	Page 21
------------------------	--------------------	---------------------------	----------------------------	------------

**Low Air filter pressure**  
**Total number of occurrences = 0**

Op hours	Year	Month	Day	Hour	Minute	Duration (sec)
0	2000	0	0	0	0	0
0	2000	0	0	0	0	0
0	2000	0	0	0	0	0
0	2000	0	0	0	0	0
0	2000	0	0	0	0	0
0	2000	0	0	0	0	0
0	2000	0	0	0	0	0
0	2000	0	0	0	0	0
0	2000	0	0	0	0	0
0	2000	0	0	0	0	0
0	2000	0	0	0	0	0
0	2000	0	0	0	0	0
0	2000	0	0	0	0	0
0	2000	0	0	0	0	0
0	2000	0	0	0	0	0
0	2000	0	0	0	0	0
0	2000	0	0	0	0	0
0	2000	0	0	0	0	0
0	2000	0	0	0	0	0
0	2000	0	0	0	0	0
0	2000	0	0	0	0	0
0	2000	0	0	0	0	0
0	2000	0	0	0	0	0
0	2000	0	0	0	0	0



### Starter overheating

**Total number of occurences = 1**

Op hours	Year	Month	Day	Hour	Minute
0	2000	0	0	0	0
0	2000	0	0	0	0
0	2000	0	0	0	0
0	2000	0	0	0	0
0	2000	0	0	0	0
0	2000	0	0	0	0
0	2000	0	0	0	0
0	2000	0	0	0	0
0	2000	0	0	0	0
0	2000	0	0	0	0
0	2000	0	0	0	0
0	2000	0	0	0	0
0	2000	0	0	0	0
0	2000	0	0	0	0
0	2000	0	0	0	0
0	2000	0	0	0	0
0	2000	0	0	0	0
0	2000	0	0	0	0
0	2000	0	0	0	0
0	2000	0	0	0	0
0	2000	0	0	0	0
<b>5452</b>	<b>2013</b>	<b>4</b>	<b>2</b>	<b>5</b>	<b>8</b>



Machine model L180F	Serial no 11633	Operating hours 7722,6	Reading date 21-11-2013	Page 23
------------------------	--------------------	---------------------------	----------------------------	------------

## High voltage

**Total number of occurrences = 0**

Op hours	Year	Month	Day	Hour	Minute	Duration (sec)	Extreme value
0	2000	0	0	0	0	0	0
0	2000	0	0	0	0	0	0
0	2000	0	0	0	0	0	0
0	2000	0	0	0	0	0	0
0	2000	0	0	0	0	0	0
0	2000	0	0	0	0	0	0
0	2000	0	0	0	0	0	0
0	2000	0	0	0	0	0	0
0	2000	0	0	0	0	0	0
0	2000	0	0	0	0	0	0
0	2000	0	0	0	0	0	0
0	2000	0	0	0	0	0	0
0	2000	0	0	0	0	0	0
0	2000	0	0	0	0	0	0
0	2000	0	0	0	0	0	0
0	2000	0	0	0	0	0	0
0	2000	0	0	0	0	0	0
0	2000	0	0	0	0	0	0
0	2000	0	0	0	0	0	0
0	2000	0	0	0	0	0	0
0	2000	0	0	0	0	0	0
0	2000	0	0	0	0	0	0



Machine model L180F	Serial no 11633	Operating hours 7722,6	Reading date 21-11-2013	Page 24
------------------------	--------------------	---------------------------	----------------------------	------------

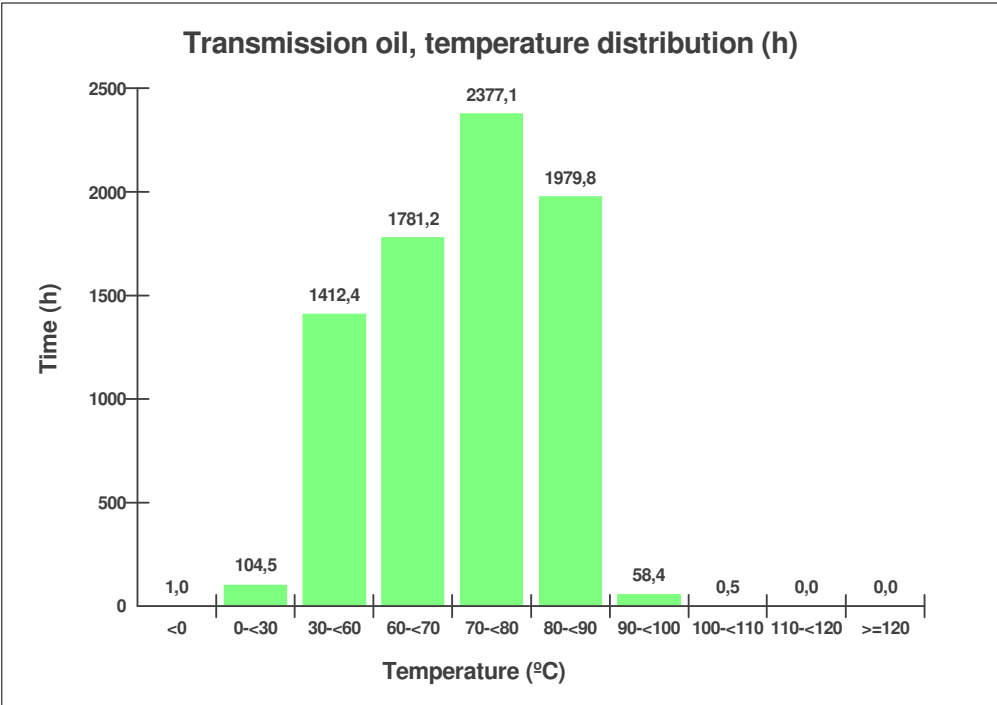
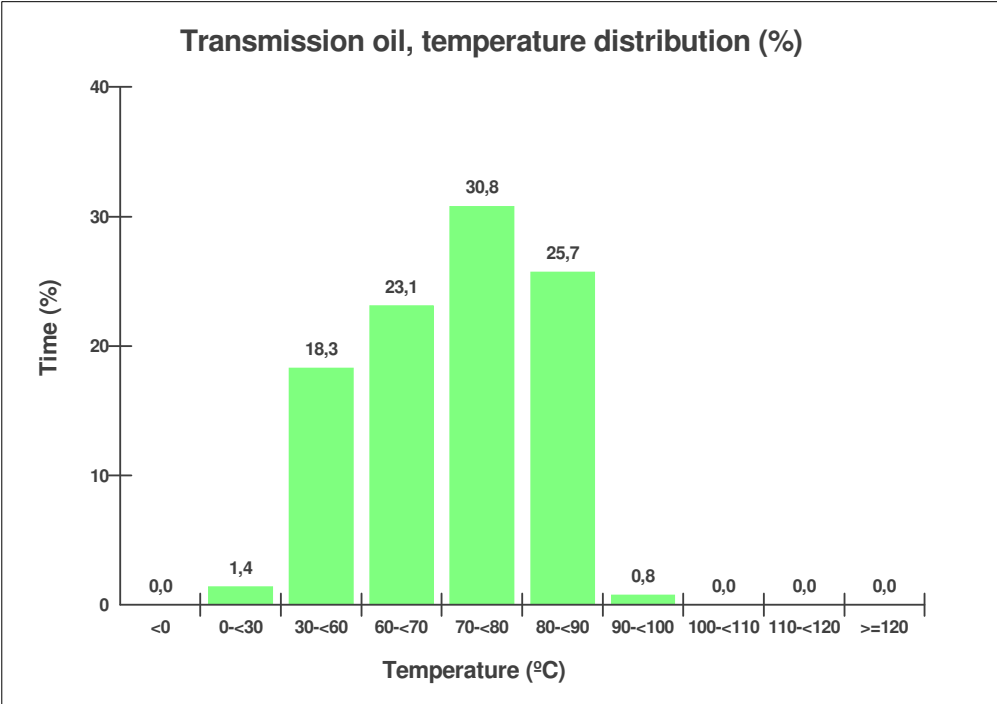
### Low voltage

Total number of occurrences = 2

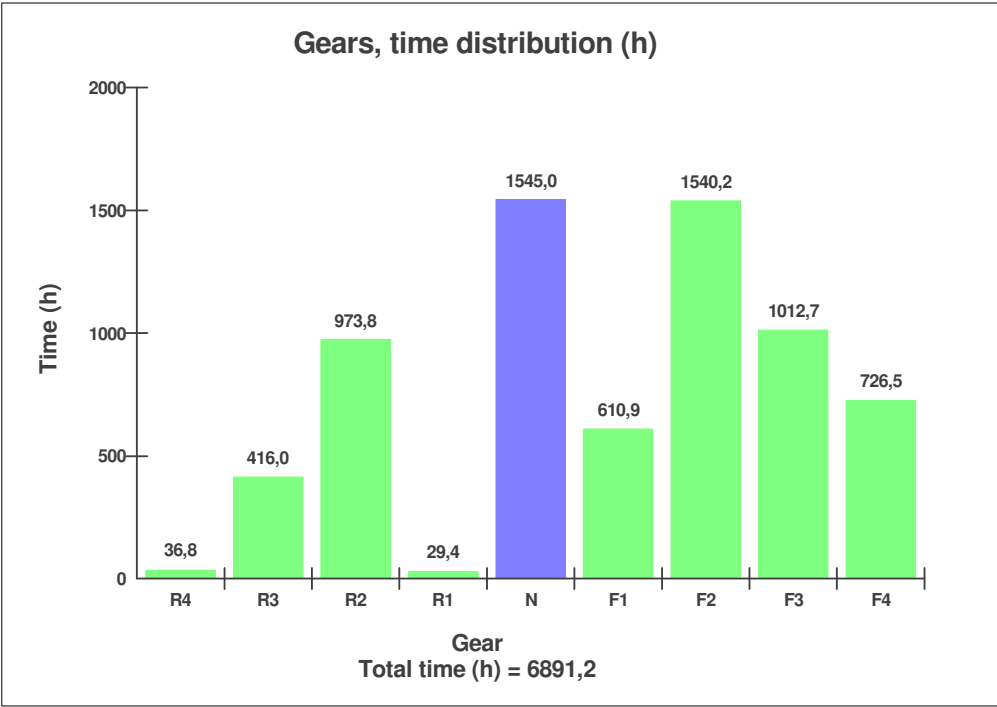
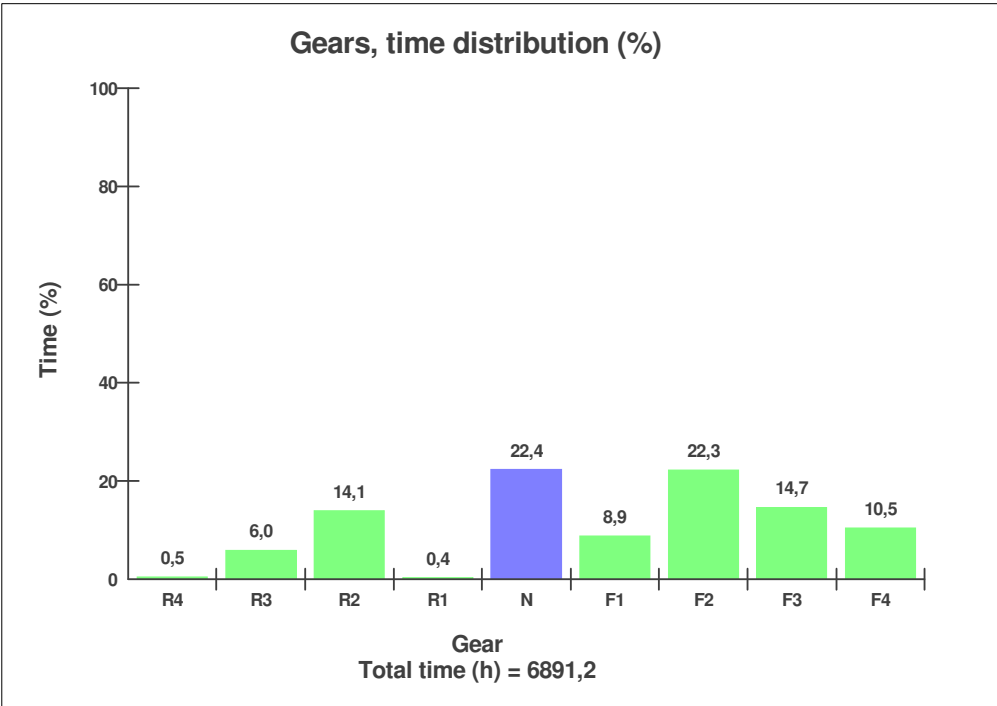
Op hours	Year	Month	Day	Hour	Minute	Duration (sec)	Extreme value
0	2000	0	0	0	0	0	0
0	2000	0	0	0	0	0	0
0	2000	0	0	0	0	0	0
0	2000	0	0	0	0	0	0
0	2000	0	0	0	0	0	0
0	2000	0	0	0	0	0	0
0	2000	0	0	0	0	0	0
0	2000	0	0	0	0	0	0
0	2000	0	0	0	0	0	0
0	2000	0	0	0	0	0	0
0	2000	0	0	0	0	0	0
0	2000	0	0	0	0	0	0
0	2000	0	0	0	0	0	0
0	2000	0	0	0	0	0	0
0	2000	0	0	0	0	0	0
0	2000	0	0	0	0	0	0
0	2000	0	0	0	0	0	0
0	2000	0	0	0	0	0	0
0	2000	0	0	0	0	0	0
0	2000	0	0	0	0	0	0
0	2000	0	0	0	0	0	0
0	2000	0	0	0	0	0	0
0	2000	0	0	0	0	0	0
0	2000	0	0	0	0	0	0
0	2000	0	0	0	0	0	0
0	2000	0	0	0	0	0	0
0	2000	0	0	0	0	0	0
7720	2013	10	7	11	12	2	74
7720	2013	10	7	11	21	4	76



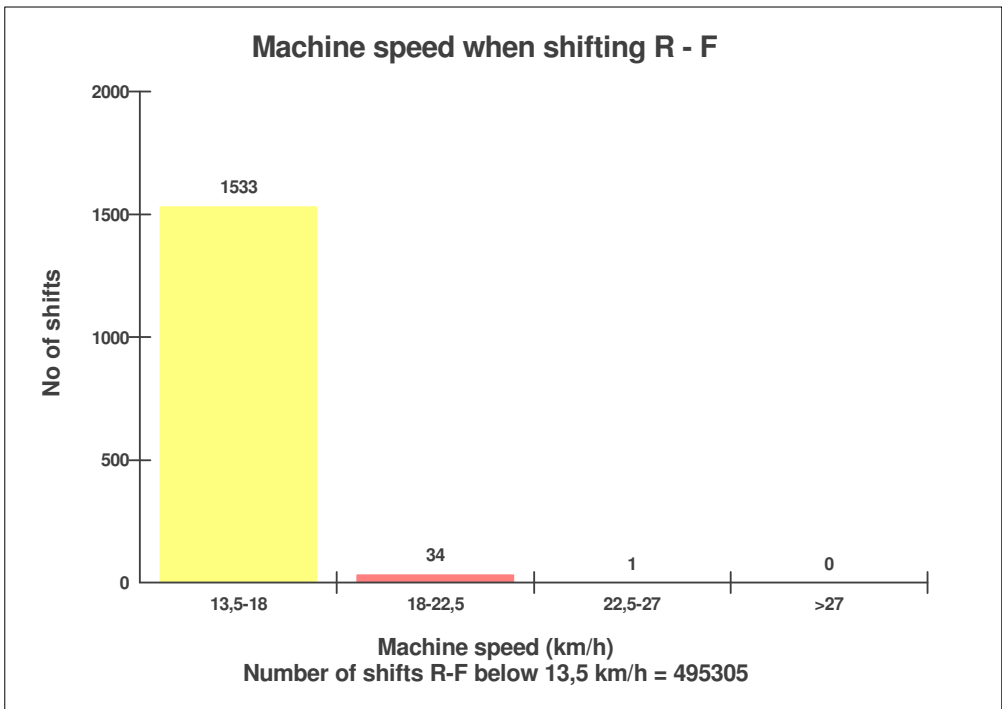
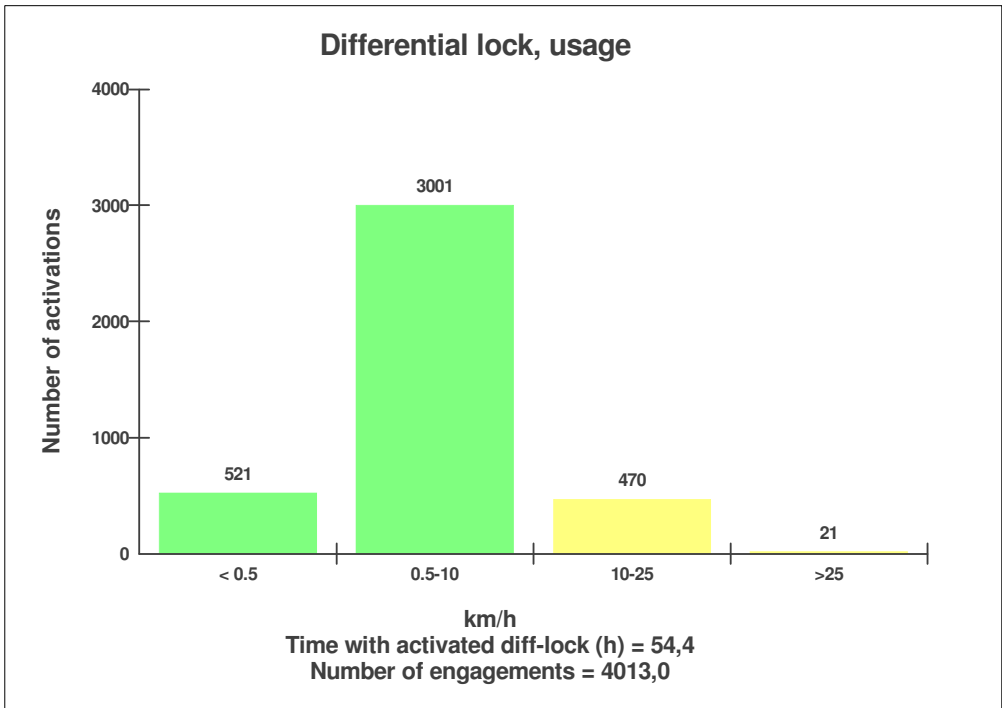




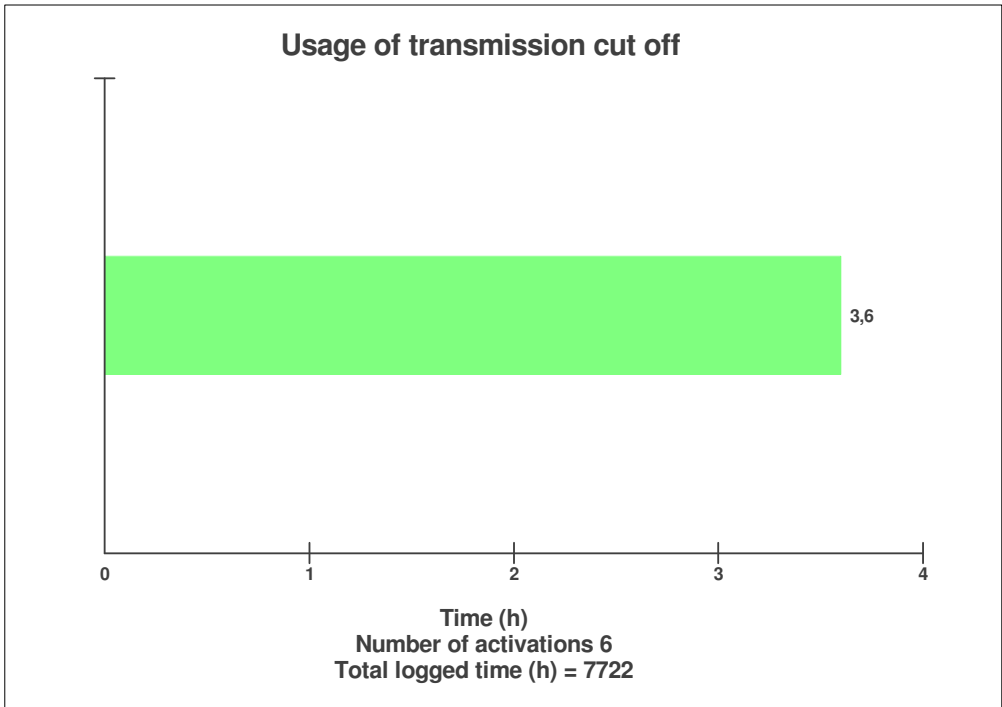
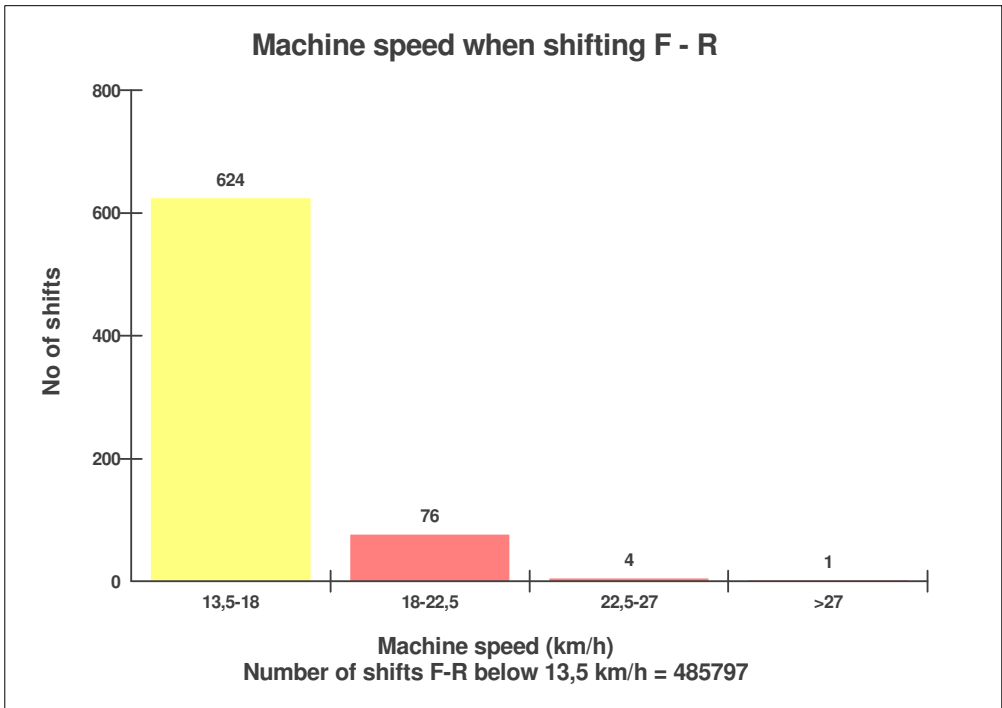
Machine model <b>L180F</b>	Serial no <b>11633</b>	Operating hours <b>7722,6</b>	Reading date <b>21-11-2013</b>	Page <b>26</b>
-------------------------------	---------------------------	----------------------------------	-----------------------------------	-------------------



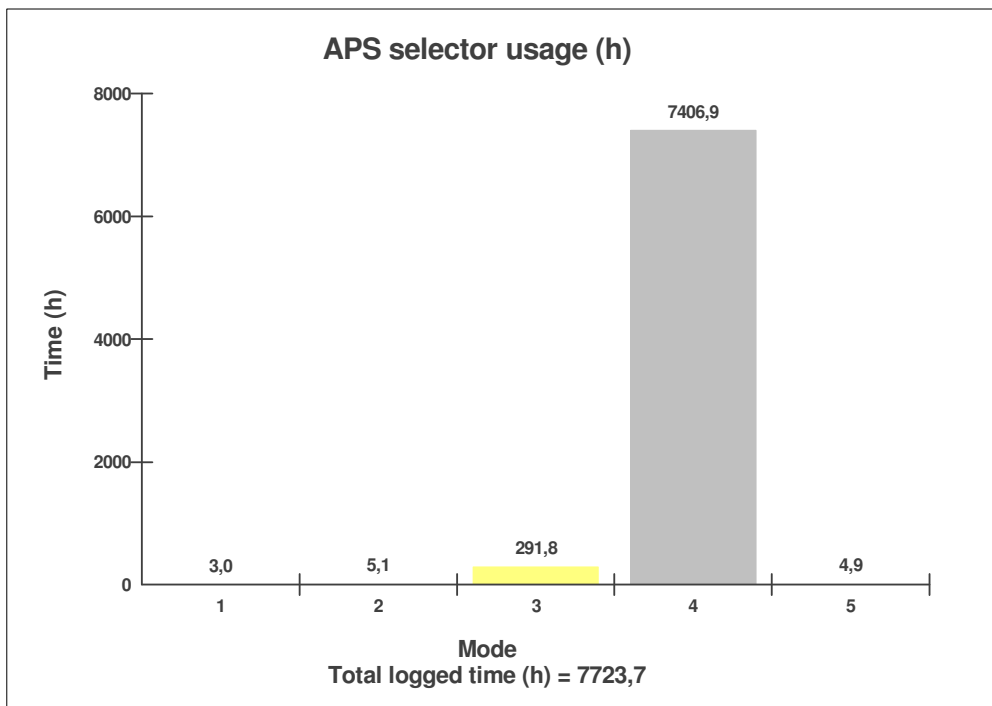
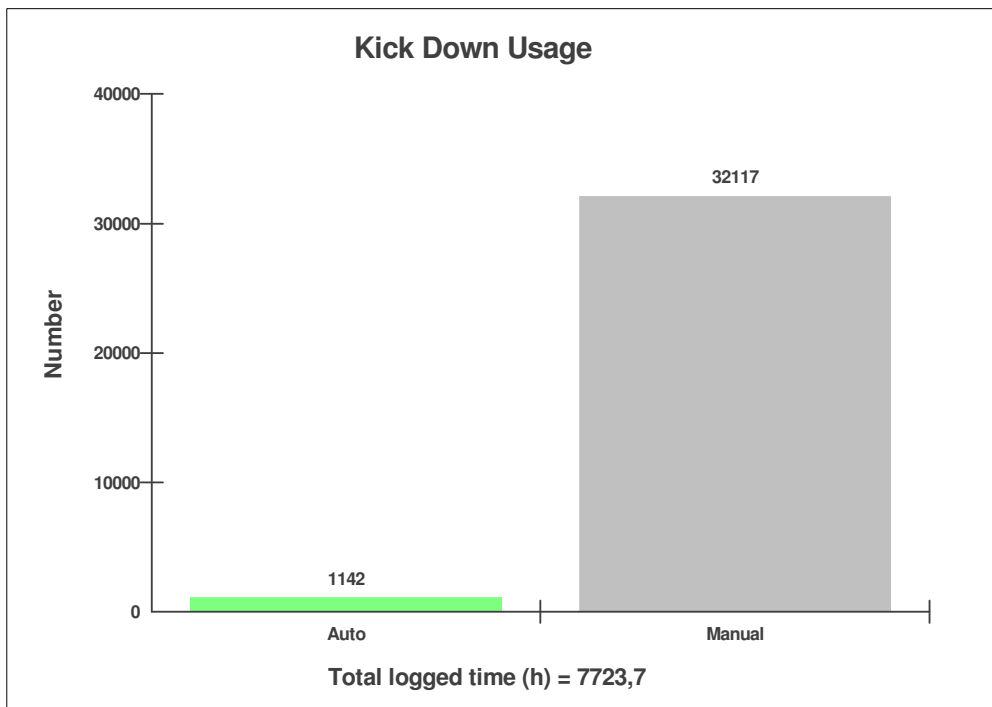
Machine model <b>L180F</b>	Serial no <b>11633</b>	Operating hours <b>7722,6</b>	Reading date <b>21-11-2013</b>	Page <b>27</b>
-------------------------------	---------------------------	----------------------------------	-----------------------------------	-------------------



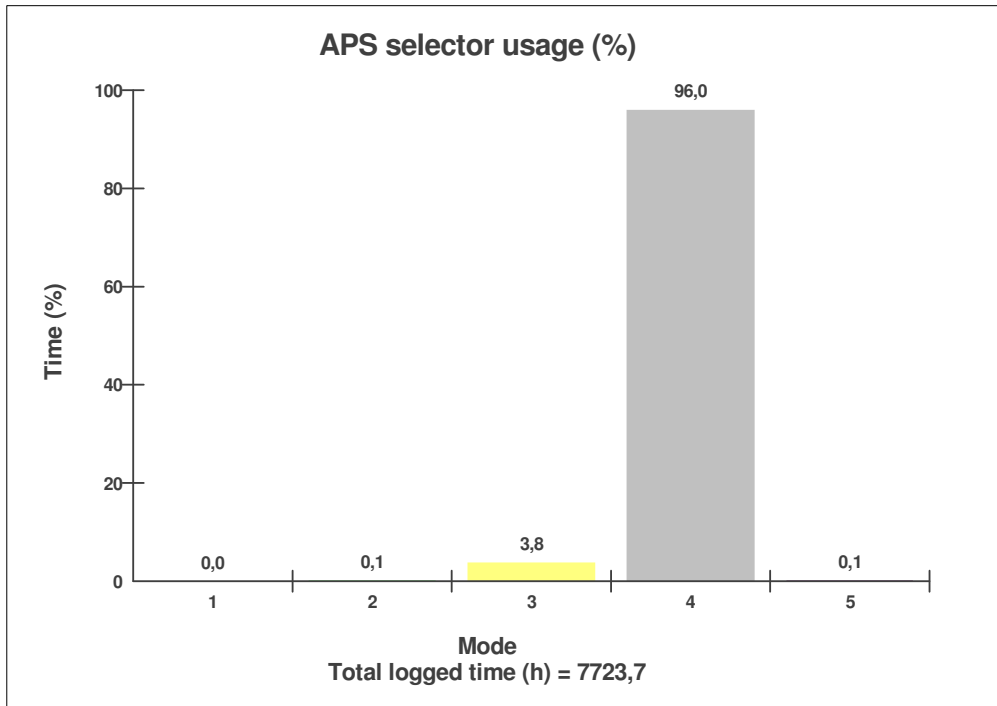
Machine model <b>L180F</b>	Serial no <b>11633</b>	Operating hours <b>7722,6</b>	Reading date <b>21-11-2013</b>	Page <b>28</b>
-------------------------------	---------------------------	----------------------------------	-----------------------------------	-------------------



Machine model <b>L180F</b>	Serial no <b>11633</b>	Operating hours <b>7722,6</b>	Reading date <b>21-11-2013</b>	Page <b>29</b>
-------------------------------	---------------------------	----------------------------------	-----------------------------------	-------------------



Machine model <b>L180F</b>	Serial no <b>11633</b>	Operating hours <b>7722,6</b>	Reading date <b>21-11-2013</b>	Page <b>30</b>
-------------------------------	---------------------------	----------------------------------	-----------------------------------	-------------------



Machine model L180F	Serial no 11633	Operating hours 7722,6	Reading date 21-11-2013	Page 31
------------------------	--------------------	---------------------------	----------------------------	------------

### Transmission oil temperature high

Total number of occurrences = 0

Op hours	Year	Month	Day	Hour	Minute	Duration (sec)	Extreme (°C)
0	2000	0	0	0	0	0	0
0	2000	0	0	0	0	0	0
0	2000	0	0	0	0	0	0
0	2000	0	0	0	0	0	0
0	2000	0	0	0	0	0	0
0	2000	0	0	0	0	0	0
0	2000	0	0	0	0	0	0
0	2000	0	0	0	0	0	0
0	2000	0	0	0	0	0	0
0	2000	0	0	0	0	0	0
0	2000	0	0	0	0	0	0
0	2000	0	0	0	0	0	0
0	2000	0	0	0	0	0	0
0	2000	0	0	0	0	0	0
0	2000	0	0	0	0	0	0
0	2000	0	0	0	0	0	0
0	2000	0	0	0	0	0	0
0	2000	0	0	0	0	0	0
0	2000	0	0	0	0	0	0
0	2000	0	0	0	0	0	0
0	2000	0	0	0	0	0	0
0	2000	0	0	0	0	0	0
0	2000	0	0	0	0	0	0
0	2000	0	0	0	0	0	0
0	2000	0	0	0	0	0	0



Machine model L180F	Serial no 11633	Operating hours 7722,6	Reading date 21-11-2013	Page 32
------------------------	--------------------	---------------------------	----------------------------	------------

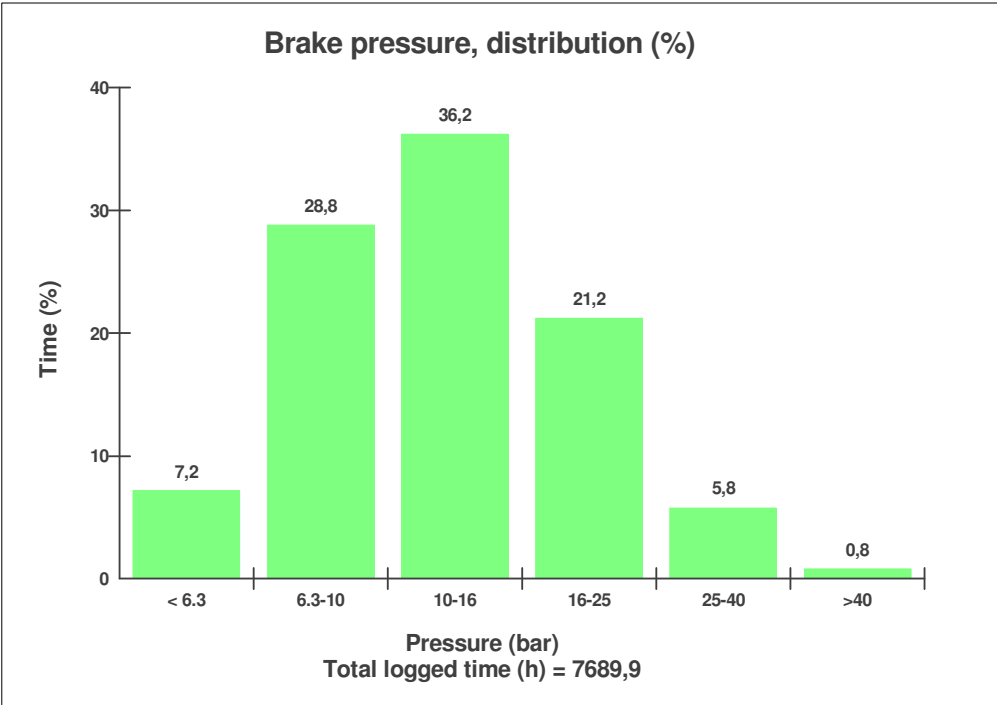
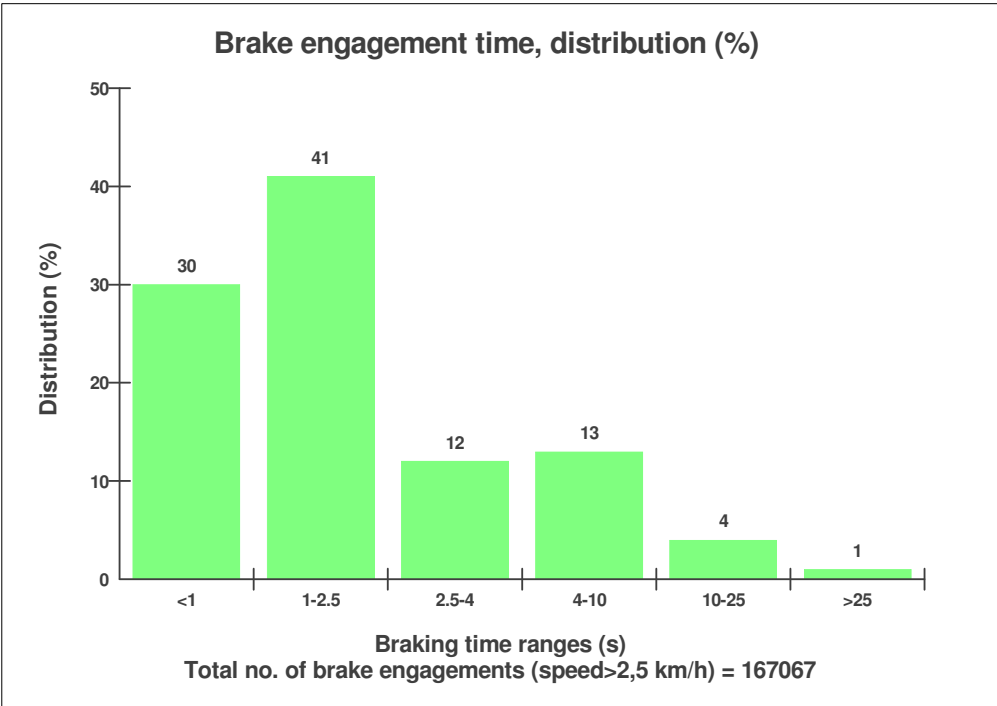
**Transmission oil pressure low**  
**Total number of occurrences = 1**

Op hours	Year	Month	Day	Hour	Minute	Duration (sec)	Extreme (bar)
0	2000	0	0	0	0	0	0
0	2000	0	0	0	0	0	0
0	2000	0	0	0	0	0	0
0	2000	0	0	0	0	0	0
0	2000	0	0	0	0	0	0
0	2000	0	0	0	0	0	0
0	2000	0	0	0	0	0	0
0	2000	0	0	0	0	0	0
0	2000	0	0	0	0	0	0
0	2000	0	0	0	0	0	0
0	2000	0	0	0	0	0	0
0	2000	0	0	0	0	0	0
0	2000	0	0	0	0	0	0
0	2000	0	0	0	0	0	0
0	2000	0	0	0	0	0	0
0	2000	0	0	0	0	0	0
0	2000	0	0	0	0	0	0
0	2000	0	0	0	0	0	0
0	2000	0	0	0	0	0	0
0	2000	0	0	0	0	0	0
0	2000	0	0	0	0	0	0
0	2008	2	18	11	42	1	3
0	2000	0	0	0	0	0	0

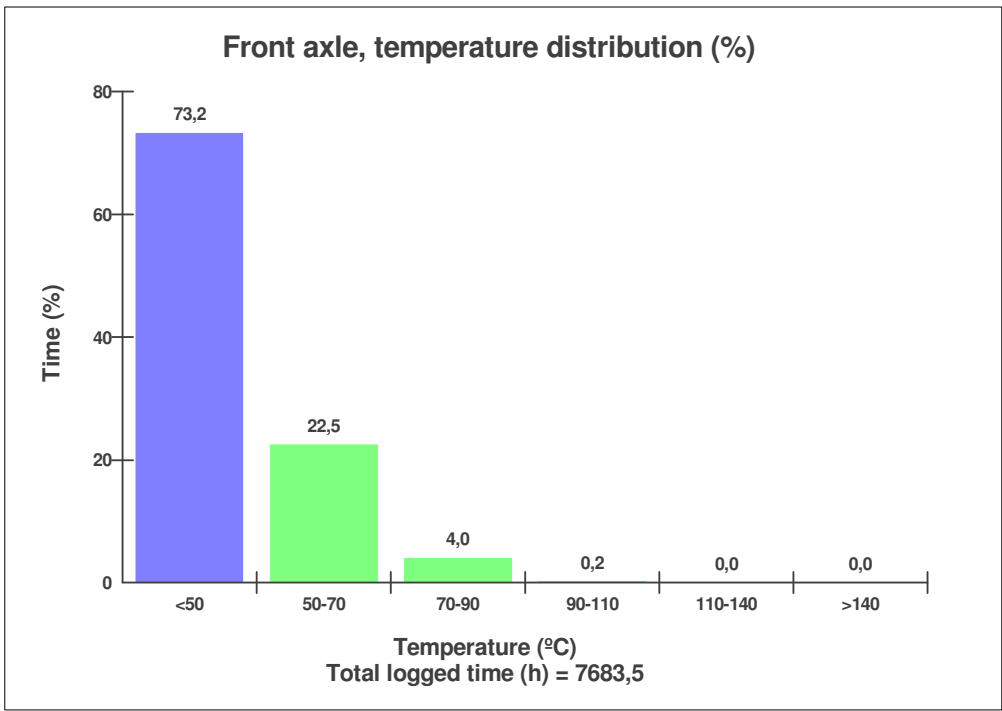
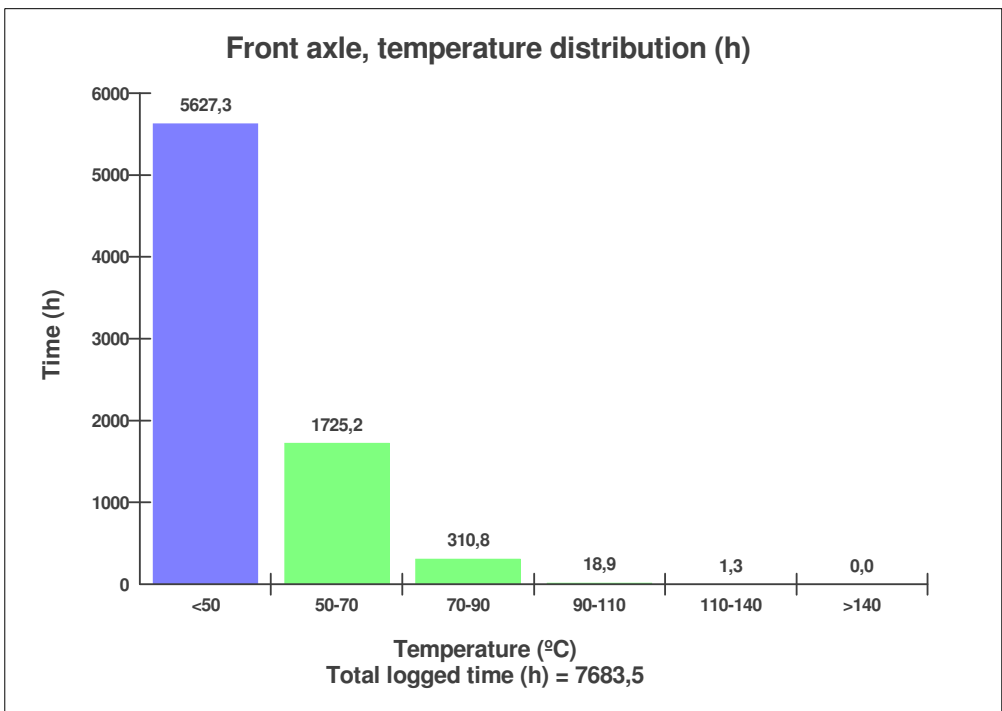




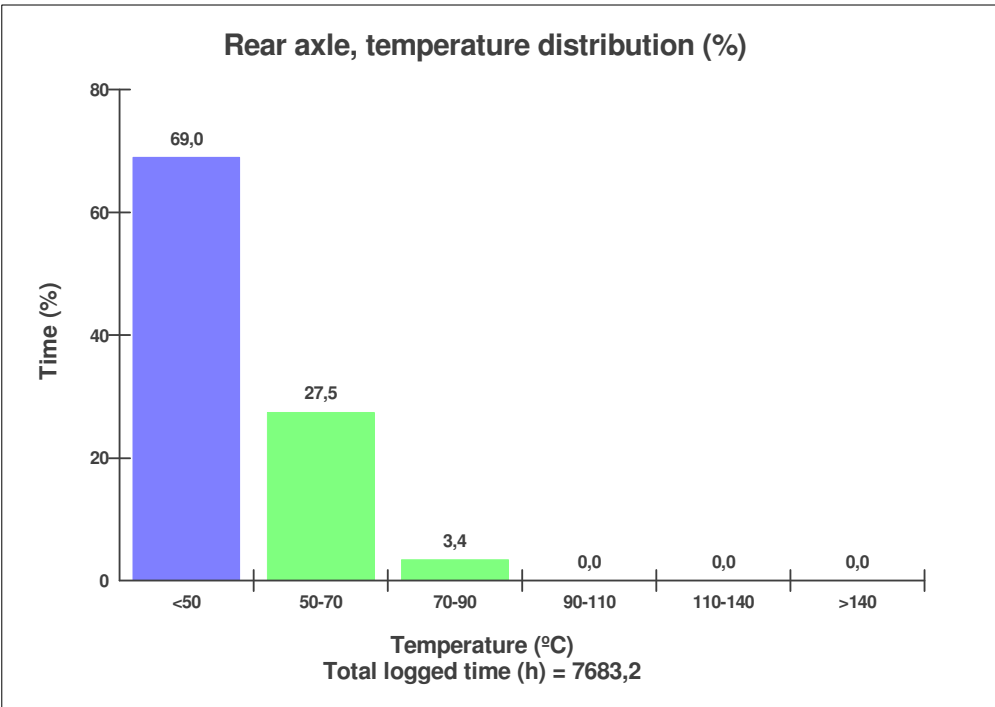
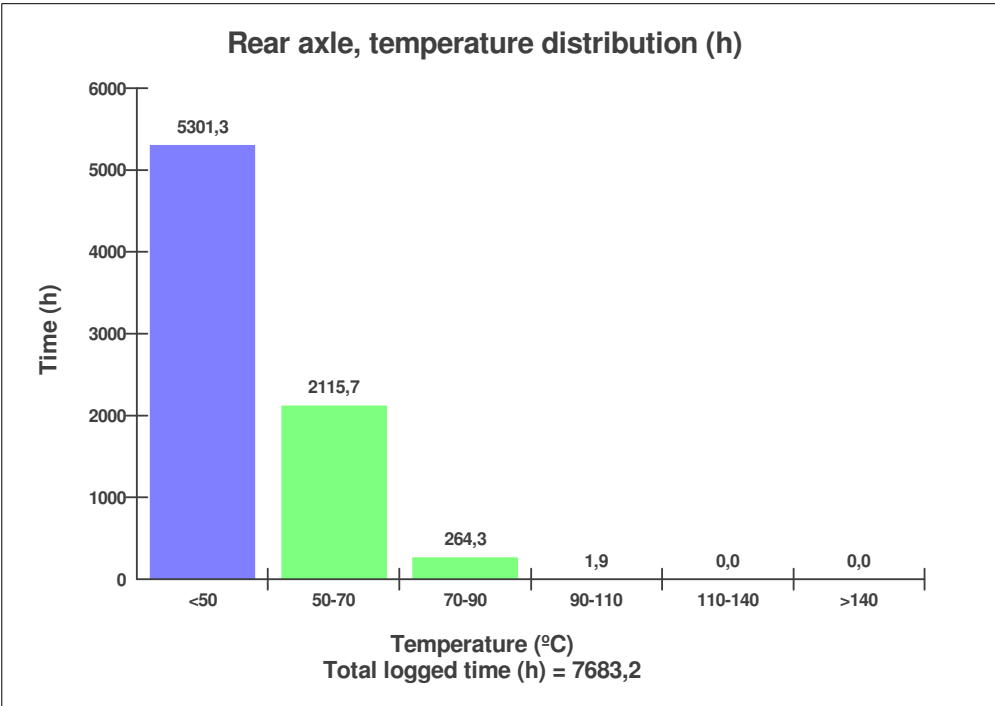
Machine model <b>L180F</b>	Serial no <b>11633</b>	Operating hours <b>7722,6</b>	Reading date <b>21-11-2013</b>	Page <b>33</b>
-------------------------------	---------------------------	----------------------------------	-----------------------------------	-------------------



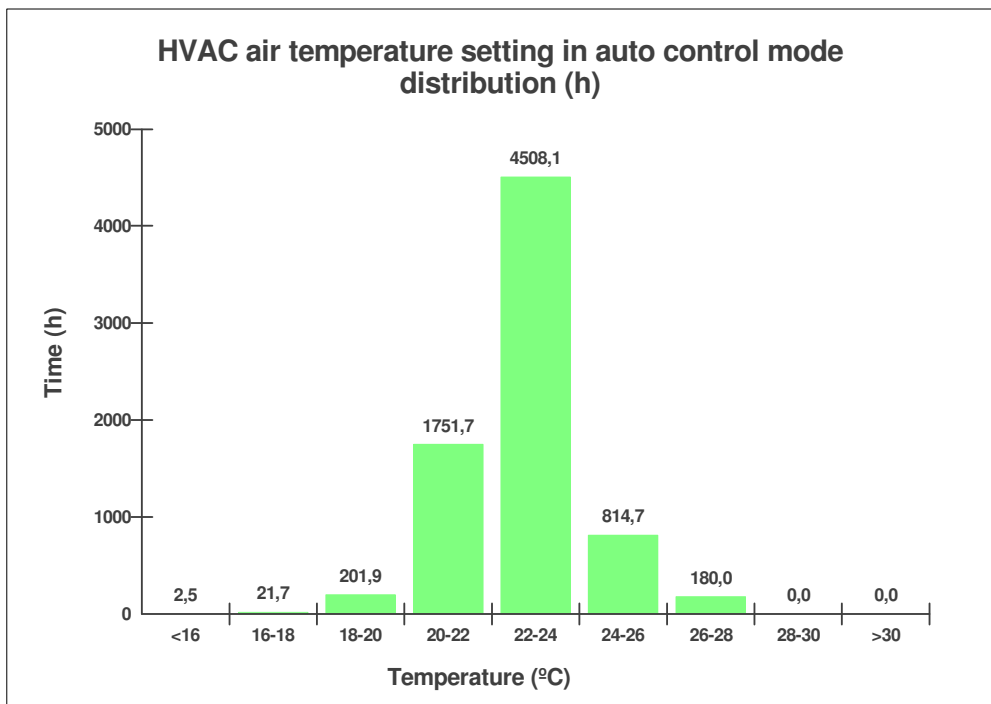
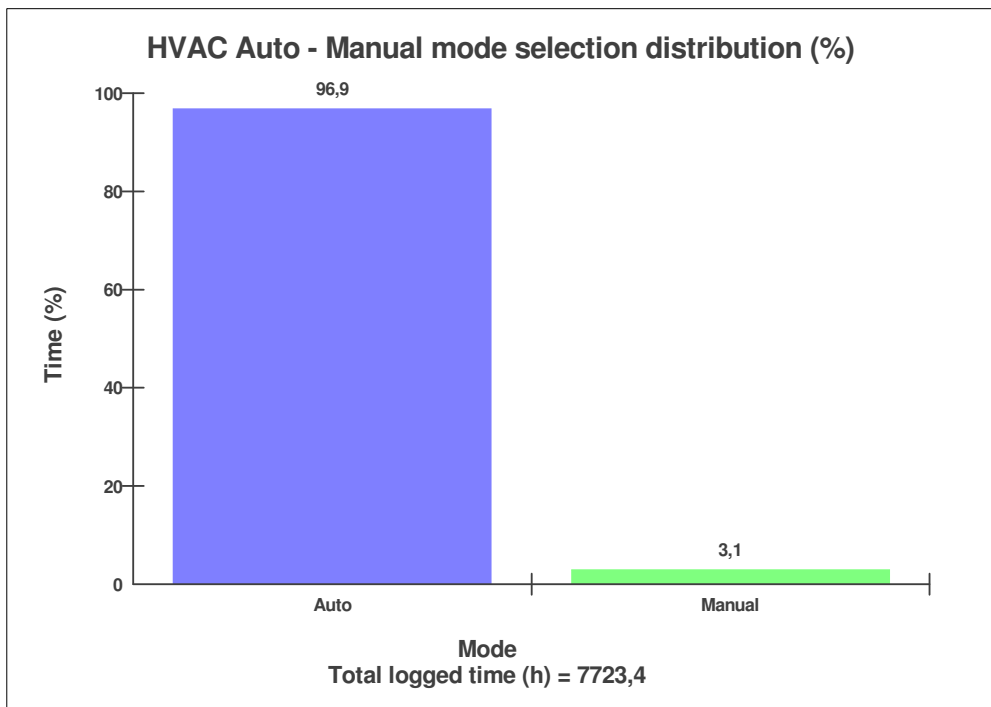
Machine model <b>L180F</b>	Serial no <b>11633</b>	Operating hours <b>7722,6</b>	Reading date <b>21-11-2013</b>	Page <b>34</b>
-------------------------------	---------------------------	----------------------------------	-----------------------------------	-------------------



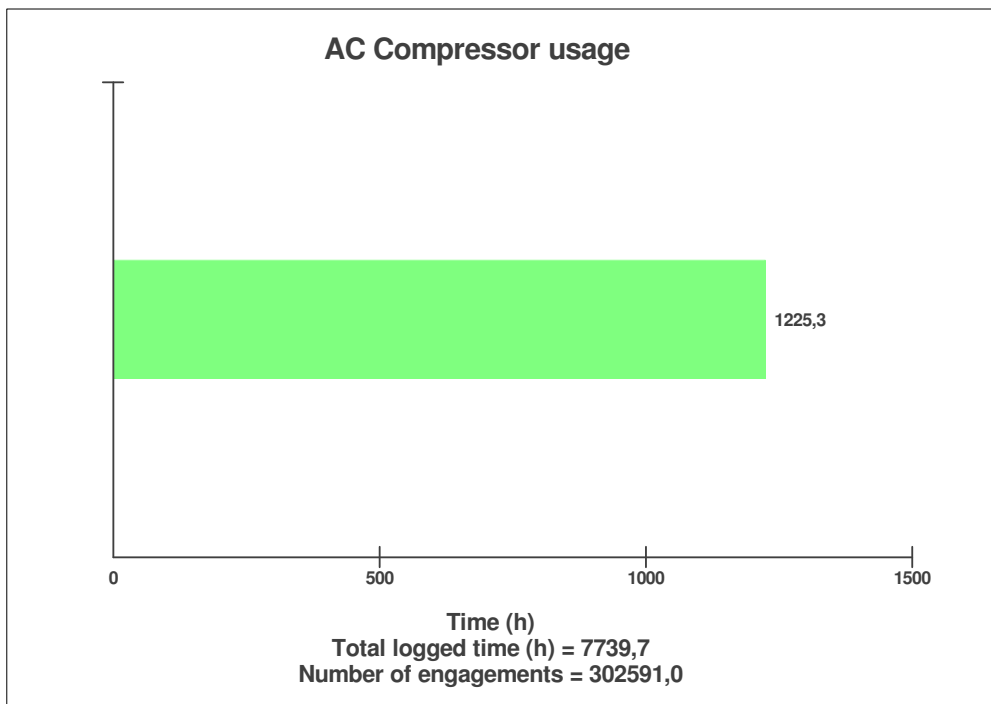
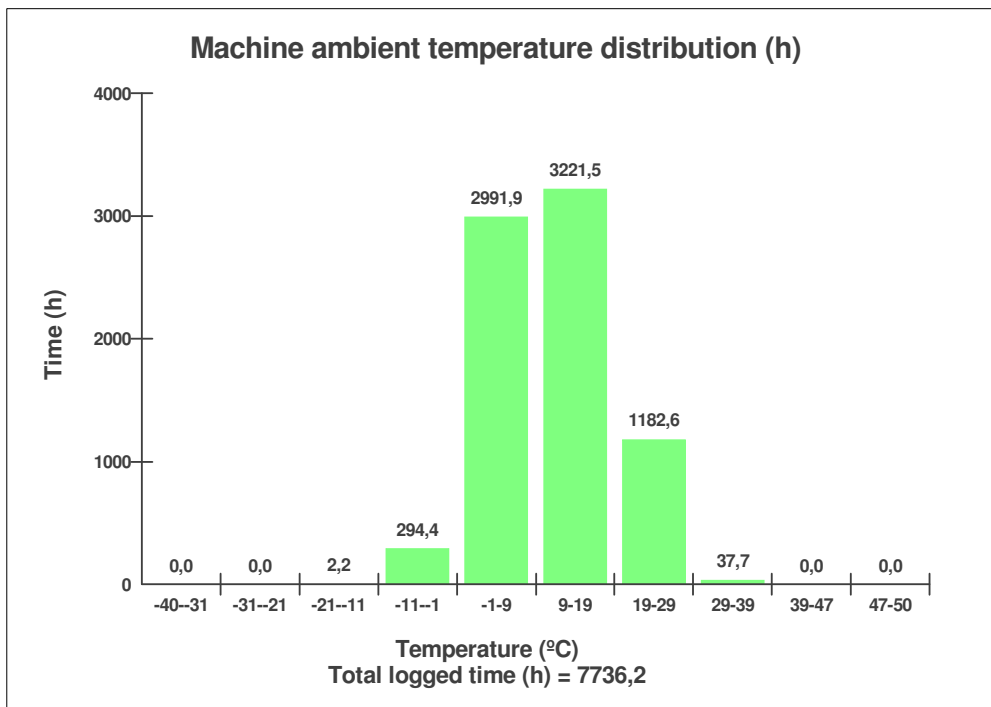
Machine model <b>L180F</b>	Serial no <b>11633</b>	Operating hours <b>7722,6</b>	Reading date <b>21-11-2013</b>	Page <b>35</b>
-------------------------------	---------------------------	----------------------------------	-----------------------------------	-------------------



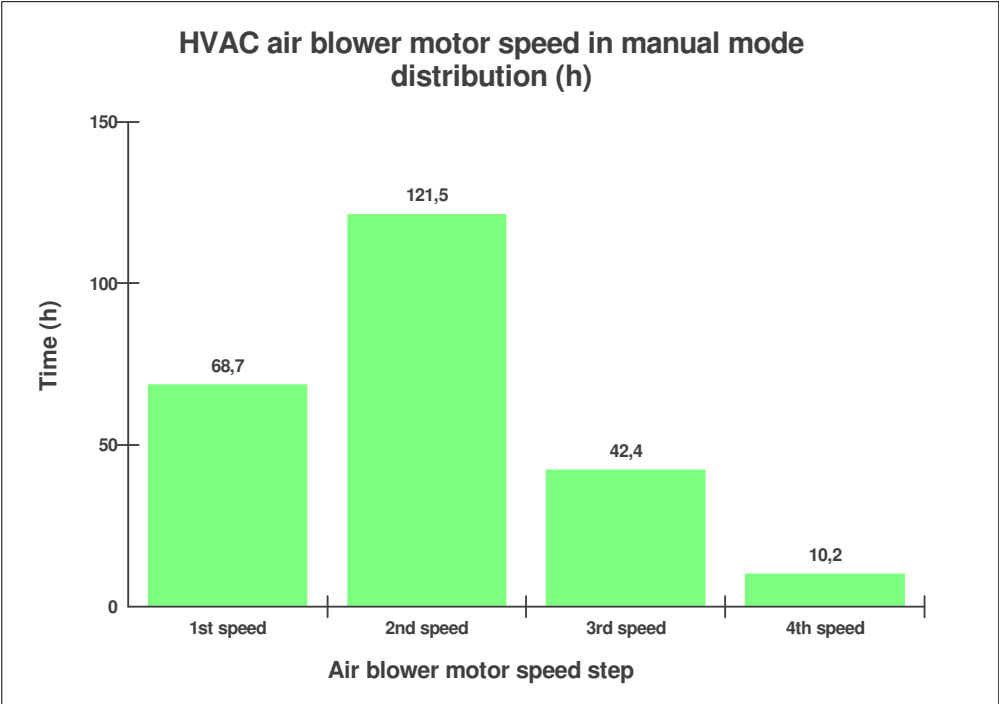
Machine model <b>L180F</b>	Serial no <b>11633</b>	Operating hours <b>7722,6</b>	Reading date <b>21-11-2013</b>	Page <b>36</b>
-------------------------------	---------------------------	----------------------------------	-----------------------------------	-------------------



Machine model <b>L180F</b>	Serial no <b>11633</b>	Operating hours <b>7722,6</b>	Reading date <b>21-11-2013</b>	Page <b>37</b>
-------------------------------	---------------------------	----------------------------------	-----------------------------------	-------------------



Machine model L180F	Serial no 11633	Operating hours 7722,6	Reading date 21-11-2013	Page 38
------------------------	--------------------	---------------------------	----------------------------	------------



Machine model L180F	Serial no 11633	Operating hours 7722,6	Reading date 21-11-2013	Page 39
------------------------	--------------------	---------------------------	----------------------------	------------

**AC High Pressure**

**Total number of occurrences = 0**

Op hours	Year	Month	Day	Hour	Minute	Duration (sec)	Extreme (°C)
0	2000	0	0	0	0	0	0
0	2000	0	0	0	0	0	0
0	2000	0	0	0	0	0	0
0	2000	0	0	0	0	0	0
0	2000	0	0	0	0	0	0
0	2000	0	0	0	0	0	0
0	2000	0	0	0	0	0	0
0	2000	0	0	0	0	0	0
0	2000	0	0	0	0	0	0
0	2000	0	0	0	0	0	0
0	2000	0	0	0	0	0	0
0	2000	0	0	0	0	0	0
0	2000	0	0	0	0	0	0
0	2000	0	0	0	0	0	0
0	2000	0	0	0	0	0	0
0	2000	0	0	0	0	0	0
0	2000	0	0	0	0	0	0
0	2000	0	0	0	0	0	0
0	2000	0	0	0	0	0	0
0	2000	0	0	0	0	0	0
0	2000	0	0	0	0	0	0
0	2000	0	0	0	0	0	0
0	2000	0	0	0	0	0	0
0	2000	0	0	0	0	0	0



Machine model <b>L180F</b>	Serial no <b>11633</b>	Operating hours <b>7722,6</b>	Reading date <b>21-11-2013</b>	Page <b>40</b>
-------------------------------	---------------------------	----------------------------------	-----------------------------------	-------------------

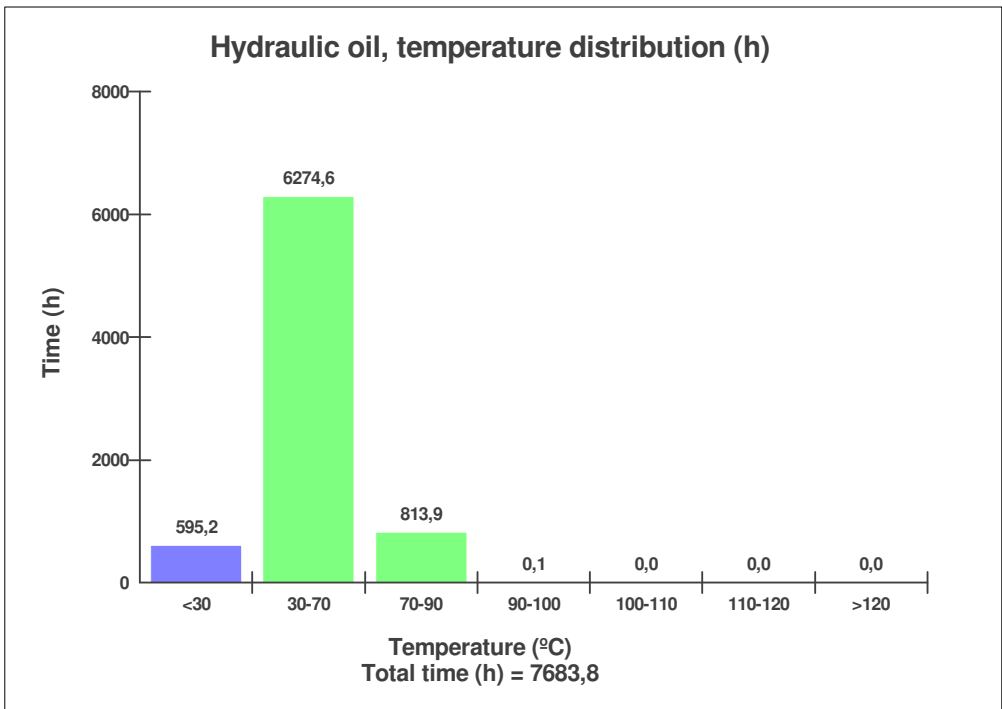
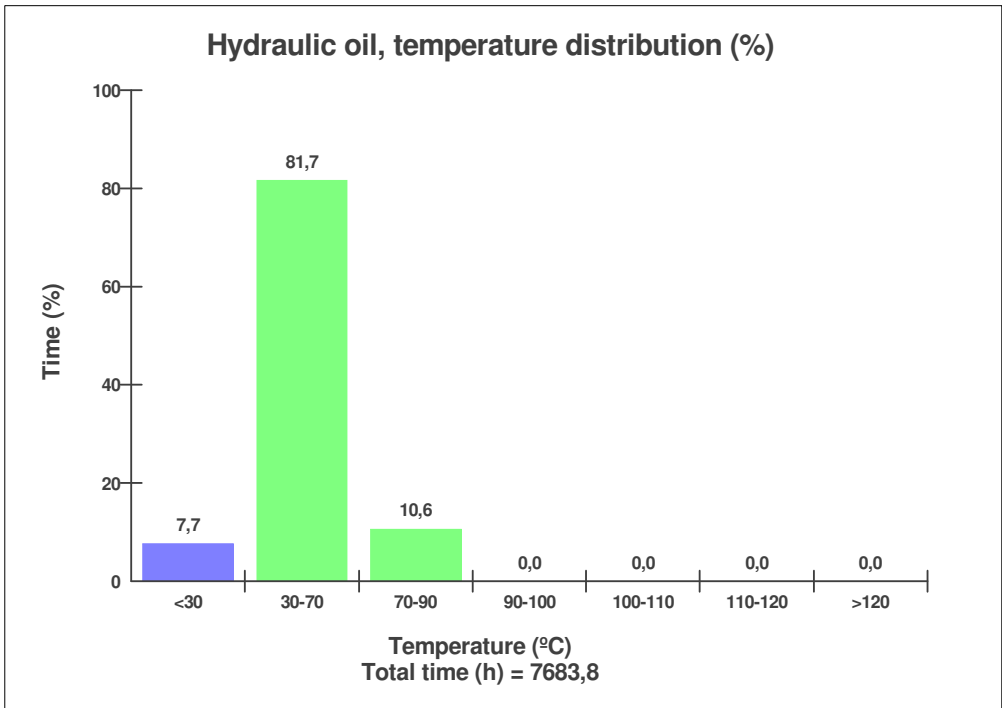
**AC Boiling Protection**  
**Number of engagements = 0**

<b>Op hours</b>	<b>Year</b>	<b>Month</b>	<b>Day</b>	<b>Hour</b>	<b>Minute</b>	<b>Duration</b>	<b>Extreme (°C)</b>
						<b>(sec)</b>	
0	2000	0	0	0	0	0	0
0	2000	0	0	0	0	0	0
0	2000	0	0	0	0	0	0
0	2000	0	0	0	0	0	0
0	2000	0	0	0	0	0	0
0	2000	0	0	0	0	0	0
0	2000	0	0	0	0	0	0
0	2000	0	0	0	0	0	0
0	2000	0	0	0	0	0	0
0	2000	0	0	0	0	0	0
0	2000	0	0	0	0	0	0
0	2000	0	0	0	0	0	0
0	2000	0	0	0	0	0	0
0	2000	0	0	0	0	0	0
0	2000	0	0	0	0	0	0
0	2000	0	0	0	0	0	0
0	2000	0	0	0	0	0	0
0	2000	0	0	0	0	0	0
0	2000	0	0	0	0	0	0
0	2000	0	0	0	0	0	0
0	2000	0	0	0	0	0	0
0	2000	0	0	0	0	0	0
0	2000	0	0	0	0	0	0
0	2000	0	0	0	0	0	0





Machine model <b>L180F</b>	Serial no <b>11633</b>	Operating hours <b>7722,6</b>	Reading date <b>21-11-2013</b>	Page <b>41</b>
-------------------------------	---------------------------	----------------------------------	-----------------------------------	-------------------



Machine model L180F	Serial no 11633	Operating hours 7722,6	Reading date 21-11-2013	Page 42
------------------------	--------------------	---------------------------	----------------------------	------------

**High hydraulic oil temperature**  
**Total number of occurrences = 0**

Op hours	Year	Month	Day	Hour	Minute	Duration (sec)	Extreme (°C)
0	2000	0	0	0	0	0	0
0	2000	0	0	0	0	0	0
0	2000	0	0	0	0	0	0
0	2000	0	0	0	0	0	0
0	2000	0	0	0	0	0	0
0	2000	0	0	0	0	0	0
0	2000	0	0	0	0	0	0
0	2000	0	0	0	0	0	0
0	2000	0	0	0	0	0	0
0	2000	0	0	0	0	0	0
0	2000	0	0	0	0	0	0
0	2000	0	0	0	0	0	0
0	2000	0	0	0	0	0	0
0	2000	0	0	0	0	0	0
0	2000	0	0	0	0	0	0
0	2000	0	0	0	0	0	0
0	2000	0	0	0	0	0	0
0	2000	0	0	0	0	0	0
0	2000	0	0	0	0	0	0
0	2000	0	0	0	0	0	0
0	2000	0	0	0	0	0	0
0	2000	0	0	0	0	0	0
0	2000	0	0	0	0	0	0
0	2000	0	0	0	0	0	0
0	2000	0	0	0	0	0	0
0	2000	0	0	0	0	0	0



Machine model L180F	Serial no 11633	Operating hours 7722,6	Reading date 21-11-2013	Page 43
------------------------	--------------------	---------------------------	----------------------------	------------

**Low Hydraulic Oil Level**  
**Total number of occurrences = 1**

Op hours	Year	Month	Day	Hour	Minute	Duration (min)
0	2000	0	0	0	0	0
0	2000	0	0	0	0	0
0	2000	0	0	0	0	0
0	2000	0	0	0	0	0
0	2000	0	0	0	0	0
0	2000	0	0	0	0	0
0	2000	0	0	0	0	0
0	2000	0	0	0	0	0
0	2000	0	0	0	0	0
0	2000	0	0	0	0	0
0	2000	0	0	0	0	0
0	2000	0	0	0	0	0
0	2000	0	0	0	0	0
0	2000	0	0	0	0	0
0	2000	0	0	0	0	0
0	2000	0	0	0	0	0
0	2000	0	0	0	0	0
0	2000	0	0	0	0	0
0	2000	0	0	0	0	0
0	2000	0	0	0	0	0
0	2000	0	0	0	0	0
0	2008	2	18	11	49	32
0	2000	0	0	0	0	0



Machine model <b>L180F</b>	Serial no <b>11633</b>	Operating hours <b>7722,6</b>	Reading date <b>21-11-2013</b>	Page <b>44</b>
-------------------------------	---------------------------	----------------------------------	-----------------------------------	-------------------

